

### Application

- Small electrical irrigation and drainage equipments
- Particularly applied in urban well water pumping, field irrigation and drainage, garden irrigation and household water supply, as well as drainage of industrial accumulated water, water supply and drainage for construction, livestock breeding, etc.

### Pump

- Stainless steel pump body
- Max. immersion depth: 5 m
- Max. liquid temperature: +40°C
- Liquid pH value: 4 – 10
- Max. liquid density:  $1.03 \times 10^3 \text{ kg/m}^3$

### Motor

- Copper winding
- Built-in thermal protector
- Stainless steel welded shaft
- Insulation class: B
- Protection class: IP68

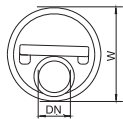
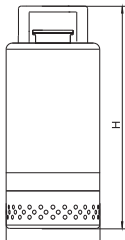
### Identification Codes

**XQS 7.2 – 8.5 / 0.25 S**

- Pump Body Material: Stainless Steel
- Power (kW)
- Max. Head (m)
- Max. Flow (m<sup>3</sup>/h)
- Submersible Pump

### Technical Data

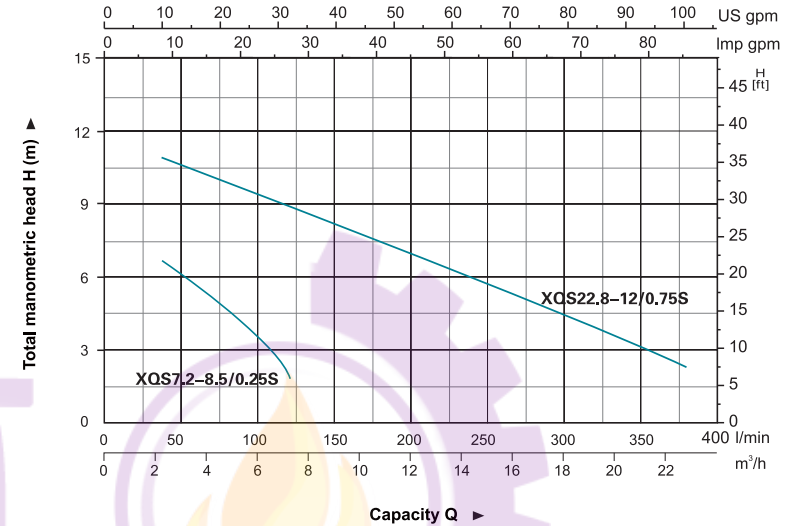
| Model            | Power |      | Outlet diameter (mm) | Voltage (V/Hz) | Max. flow (l/min) | Max. head (m) | GW (kgs) | Packing size (mm) | Quantity (PCS/20 TEU) |
|------------------|-------|------|----------------------|----------------|-------------------|---------------|----------|-------------------|-----------------------|
|                  | (kW)  | HP   |                      |                |                   |               |          |                   |                       |
| XQS7.2-8.5/0.25S | 0.25  | 0.33 | 40,32,25             | 220/50         | 120               | 8.5           | 10.2     | 175x175x360       | 2131                  |
| XQS22.8-12/0.75S | 0.75  | 1.0  | 50                   | 220/50         | 380               | 12            | 19.2     | 220x220x440       | 1132                  |



### Dimension

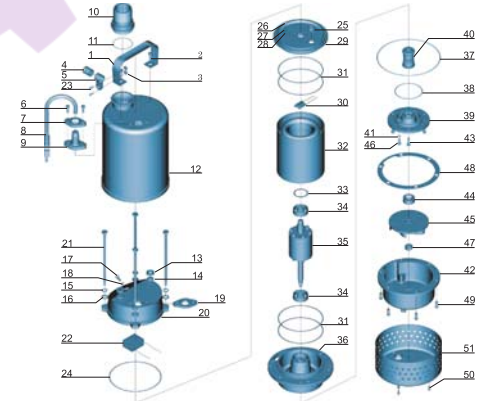
| Model            | DN     | L (mm) | W (mm) | H (mm) |
|------------------|--------|--------|--------|--------|
| XQS7.2-8.5/0.25S | 1 1/4" | 142    | 142    | 300    |
| XQS22.8-12/0.75S | 2"     | 170    | 170    | 380    |

### Hydraulic Performance Curves



### Materials Table

| No. | Part              | Material        | No. | Part              | Material        |
|-----|-------------------|-----------------|-----|-------------------|-----------------|
| 1   | Handle            | Stainless steel | 27  | Stretching washer | 65Mn            |
| 2   | Screw             | Stainless steel | 28  | Washer            | CuZn40          |
| 3   | Nut               | Stainless steel | 29  | Motor cover       | Stainless steel |
| 4   | Protector         | FKM             | 30  | Thermal protector | Stainless steel |
| 5   | Cable presser     | Stainless steel | 31  | O-ring            | FKM             |
| 6   | Screw             | Stainless steel | 32  | Stator            | Stainless steel |
| 7   | Flange            | Stainless steel | 33  | Wave washer       | 65Mn            |
| 8   | Cable             | Steel           | 34  | Ball bearing      | Stainless steel |
| 9   | Cable protector   | CR              | 35  | Rotor             | Stainless steel |
| 10  | Connector         | ABS             | 36  | Connection part   | Stainless steel |
| 11  | O-ring            | FKM             | 37  | O-ring            | FKM             |
| 12  | Motor shell       | Stainless steel | 38  | O-ring            | FKM             |
| 13  | Rubber washer     | FKM             | 39  | Oil chamber cover | Stainless steel |
| 14  | Washer            | Steel           | 40  | Mechanical seal   | Sic/Sic         |
| 15  | Stretching washer | Stainless steel | 41  | O-ring            | FKM             |
| 16  | Washer            | Stainless steel | 42  | Pump body         | Stainless steel |
| 17  | Screw             | Stainless steel | 43  | Screw             | Stainless steel |
| 18  | O-ring            | FKM             | 44  | Oil seal          | Stainless steel |
| 19  | Rubber washer     | FKM             | 45  | Impeller          | Stainless steel |
| 20  | Capacitor cover   | Stainless steel | 46  | Screw             | Stainless steel |
| 21  | Bolt              | Stainless steel | 47  | Nut               | Stainless steel |
| 22  | Capacitor         | Stainless steel | 48  | Rubber washer     | FKM             |
| 23  | Screw             | Stainless steel | 49  | Screw             | Stainless steel |
| 24  | O-ring            | FKM             | 50  | Screw             | Stainless steel |
| 25  | Cable holder      | NBR             | 51  | Filter mesh       | Stainless steel |
| 26  | Screw             | CuZn40          |     |                   |                 |



**Stainless Steel Submersible Pump**

**Application**

- Small electrical irrigation and drainage equipments
- Particularly applied in urban well water pumping, field irrigation and drainage, garden irrigation and household water supply, as well as drainage of industrial accumulated water, water supply and drainage for construction, livestock breeding, etc.

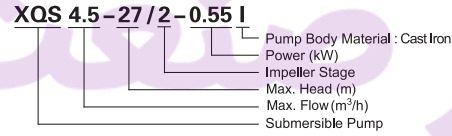
**Pump**

- Max. immersion depth: 5 m
- Max. liquid temperature: +40°C
- Liquid pH value: 6.5 – 8

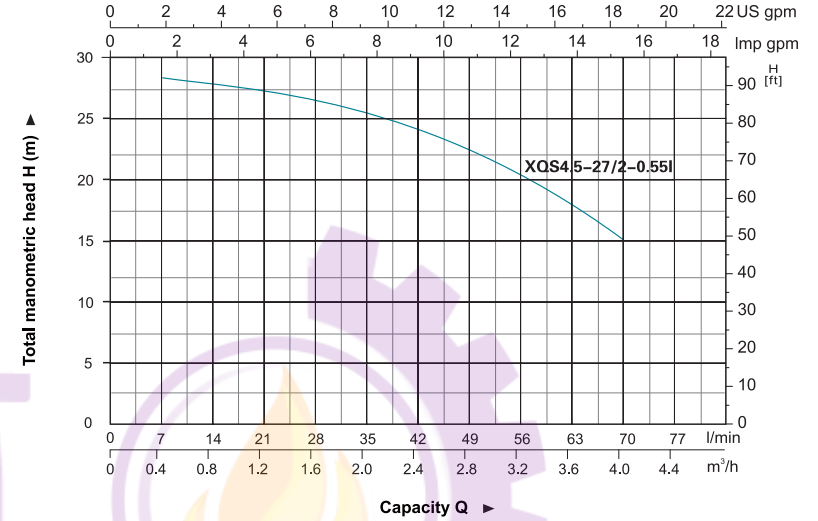
**Motor**

- Copper winding
- Built-in thermal protector
- Stainless steel welded shaft
- Insulation class: B
- Protection class: IP68

**Identification Codes**



**Hydraulic Performance Curves**

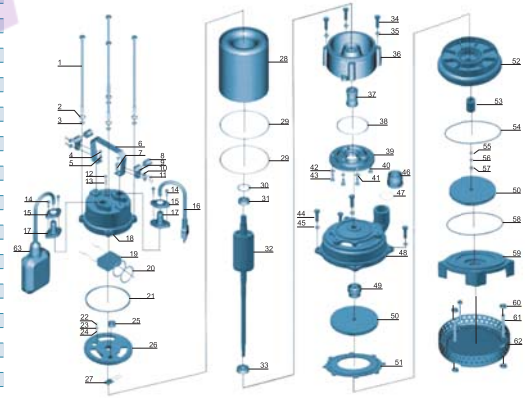


**Technical Data**

| Model             | Power |      | Outlet diameter (mm) | Voltage (V/Hz) | Max. flow (l/min) | Max. head (m) | GW (kgs) | Packing size (mm) | Quantity (PCS/20 TEU) |
|-------------------|-------|------|----------------------|----------------|-------------------|---------------|----------|-------------------|-----------------------|
|                   | (kW)  | HP   |                      |                |                   |               |          |                   |                       |
| XQS4.5-27/2-0.55I | 0.55  | 0.75 | 25                   | 220/50         | 75                | 27            | 21.8     | 500x270x235       | 980                   |

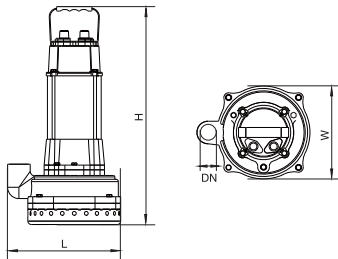
**Materials Table**

| No. | Part              | Material        | No. | Part              | Material        |
|-----|-------------------|-----------------|-----|-------------------|-----------------|
| 1   | Bolt              | Stainless steel | 33  | Ball bearing      | Stainless steel |
| 2   | Stretching washer | Stainless steel | 34  | Bolt              | Stainless steel |
| 3   | Washer            | Stainless steel | 35  | Washer            | Stainless steel |
| 4   | Bolt              | Stainless steel | 36  | Connection part   | HT200           |
| 5   | Washer            | Stainless steel | 37  | Mechanical seal   | Carbon/Ceramic  |
| 6   | Handle            | Stainless steel | 38  | O-ring            | NBR             |
| 7   | Nut               | Stainless steel | 39  | Oil chamber cover | HT200           |
| 8   | Protector         | NR              | 40  | Screw             | Stainless steel |
| 9   | Cable presser     | Stainless steel | 41  | Washer            | Stainless steel |
| 10  | Washer            | Stainless steel | 42  | O-ring            | Stainless steel |
| 11  | Screw             | Stainless steel | 43  | Screw             | Stainless steel |
| 12  | Bolt              | Stainless steel | 44  | Bolt              | Stainless steel |
| 13  | O-ring            | NBR             | 45  | Washer            | Stainless steel |
| 14  | Bolt              | Stainless steel | 46  | Connector         | ABS             |
| 15  | Flange            | Stainless steel | 47  | O-ring            | NBR             |
| 16  | Cable             |                 | 48  | Pump body         | HT200           |
| 17  | Cable protector   | CR              | 49  | Mechanical seal   | Carbon/Ceramic  |
| 18  | Capacitor cover   | HT200           | 50  | Impeller          | PPC             |
| 19  | Capacitor         |                 | 51  | Guidleaf cover    | PPC             |
| 20  | O-ring            | NBR             | 52  | Guidleaf          | PPC             |
| 21  | O-ring            | NBR             | 53  | Sleeve            | PPC             |
| 22  | Screw             | CuZn40          | 54  | O-ring            | NBR             |
| 23  | Stretching washer | 65Mn            | 55  | Washer            | Stainless steel |
| 24  | Washer            | CuZn40          | 56  | Stretching washer | Stainless steel |
| 25  | Cable holder      | NBR             | 57  | Nut               | Stainless steel |
| 26  | Motor cover       | HT200           | 58  | O-ring            | NBR             |
| 27  | Thermal protector |                 | 59  | Pump cover        | HT200           |
| 28  | Stator            |                 | 60  | Nut               |                 |
| 29  | O-ring            | NBR             | 61  | Bilateral nut     | Stainless steel |
| 30  | Wave washer       | 65Mn            | 62  | Filter mesh       | Stainless steel |
| 31  | Ball bearing      |                 | 63  | Float switch      |                 |
| 32  | Rotor             |                 |     |                   |                 |



**Dimension**

| Model             | DN | L (mm) | W (mm) | H (mm) |
|-------------------|----|--------|--------|--------|
| XQS4.5-27/2-0.55I | 1" | 235    | 198    | 462    |





### Application

- Small electrical irrigation and drainage equipments
- Particularly applied in urban well water pumping, field irrigation and drainage, garden irrigation and household water supply, as well as drainage of industrial accumulated water, water supply and drainage for construction, livestock breeding, etc.

### Pump

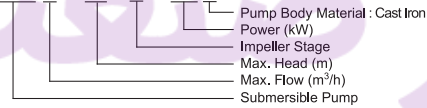
- Max. immersion depth: 5 m
- Max. liquid temperature: +40°C
- Liquid pH value: 6.5 – 8

### Motor

- Copper winding
- Built-in thermal protector
- Stainless steel welded shaft
- Insulation class: B
- Protection class: IP68

### Identification Codes

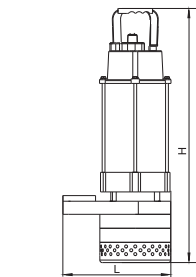
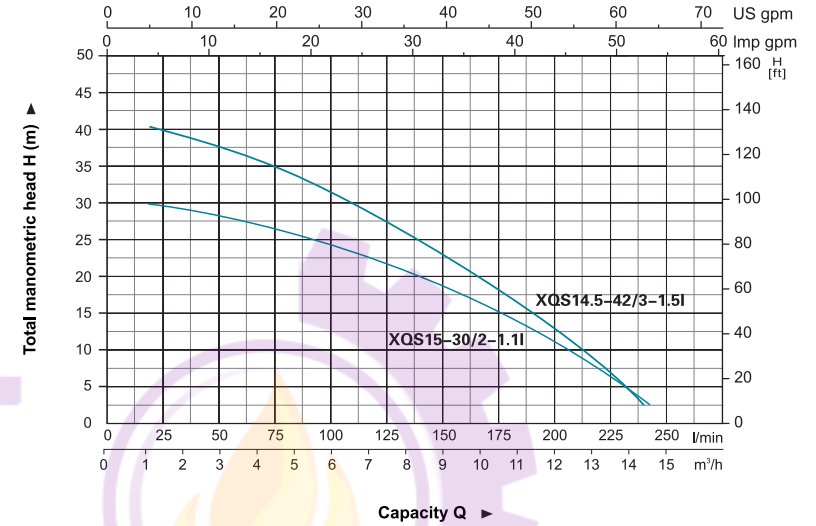
**XQS15 - 30 / 2 - 1.1 I**



### Technical Data

| Model             | Power |     | Outlet diameter (mm) | Voltage (V/Hz) | Max. flow (l/min) | Max. head (m) | GW (kgs) | Packing size (mm) | Quantity (PCS/20 TEU) |
|-------------------|-------|-----|----------------------|----------------|-------------------|---------------|----------|-------------------|-----------------------|
|                   | (kW)  | HP  |                      |                |                   |               |          |                   |                       |
| XQS15-30/2-1.1    | 1.1   | 1.5 | 50                   | 220/50         | 250               | 30            | 23.3     | 555x290x220       | 840                   |
| XQS14.5-42/3-1.5I | 1.5   | 2.0 | 50                   | 220/50         | 240               | 42            | 26.8     | 625x285x205       | 814                   |

### Hydraulic Performance Curves

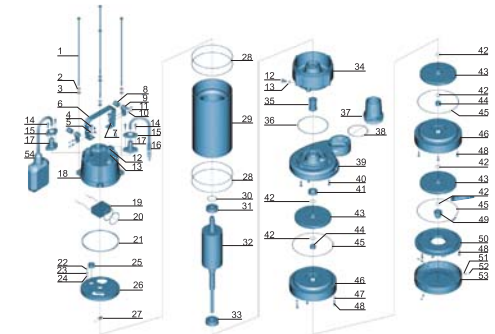


### Dimension

| Model             | DN | L (mm) | W (mm) | H (mm) |
|-------------------|----|--------|--------|--------|
| XQS15-30/2-1.1    | 2" | 232    | 152    | 508    |
| XQS14.5-42/3-1.5I |    | 232    | 152    | 567    |

### Materials Table

| No. | Part              | Material        | No. | Part              | Material        |
|-----|-------------------|-----------------|-----|-------------------|-----------------|
| 1   | Bolt              | Stainless steel | 29  | Stator            |                 |
| 2   | Stretching washer | Stainless steel | 30  | Wave washer       | 65Mn            |
| 3   | Washer            | Stainless steel | 31  | Ball bearing      |                 |
| 4   | Bolt              | Stainless steel | 32  | Rotor             |                 |
| 5   | Washer            | Stainless steel | 33  | Ball bearing      |                 |
| 6   | Handle            | Stainless steel | 34  | Connection part   | HT200           |
| 7   | Nut               | Stainless steel | 35  | Mechanical seal   | Carbon/Ceramic  |
| 8   | Protector         | NR              | 36  | O-ring            | NBR             |
| 9   | Cable presser     | Stainless steel | 37  | Connector         | ABS             |
| 10  | Washer            | Stainless steel | 38  | O-ring            | NBR             |
| 11  | Screw             | Stainless steel | 39  | Pump body         | HT200           |
| 12  | Bolt              | Stainless steel | 40  | Screw             | Stainless steel |
| 13  | O-ring            | NBR             | 41  | Oil seal          |                 |
| 14  | Screw             | Stainless steel | 42  | Rubber washer     | NBR             |
| 15  | Flange            | Stainless steel | 43  | Impeller          | HT200           |
| 16  | Cable             |                 | 44  | Ring              | Steel           |
| 17  | Cable protector   | CR              | 45  | O-ring            | NBR             |
| 18  | Capacitor cover   | HT200           | 46  | Diffuser          | HT200           |
| 19  | Capacitor         |                 | 47  | Stretching washer | Stainless steel |
| 20  | O-ring            | NBR             | 48  | Screw             | Stainless steel |
| 21  | Rubber washer     | NBR             | 49  | Nut               | Stainless steel |
| 22  | Screw             | CuZn40          | 50  | Pump cover        | HT200           |
| 23  | Stretching washer | 65Mn            | 51  | Washer            | Stainless steel |
| 24  | Washer            | CuZn40          | 52  | Screw             | Stainless steel |
| 25  | Cable holder      | NBR             | 53  | Filter mesh       | Steel           |
| 26  | Motor cover       | HT200           | 54  | Float switch      |                 |
| 27  | Thermal protector |                 | 55  | Key               | Steel           |
| 28  | O-ring            | NBR             |     |                   |                 |



**Stainless Steel Submersible Pump**

**Application**

- Small electrical irrigation and drainage equipments
- Particularly applied in urban well water pumping, field irrigation and drainage, garden irrigation and household water supply, as well as drainage of industrial accumulated water, water supply and drainage for construction, livestock breeding, etc.

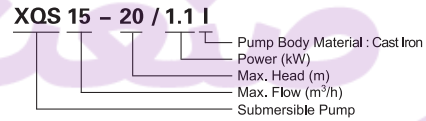
**Pump**

- Max. immersion depth: 5 m
- Max. liquid temperature: +40°C
- Liquid pH value: 6.5 – 8

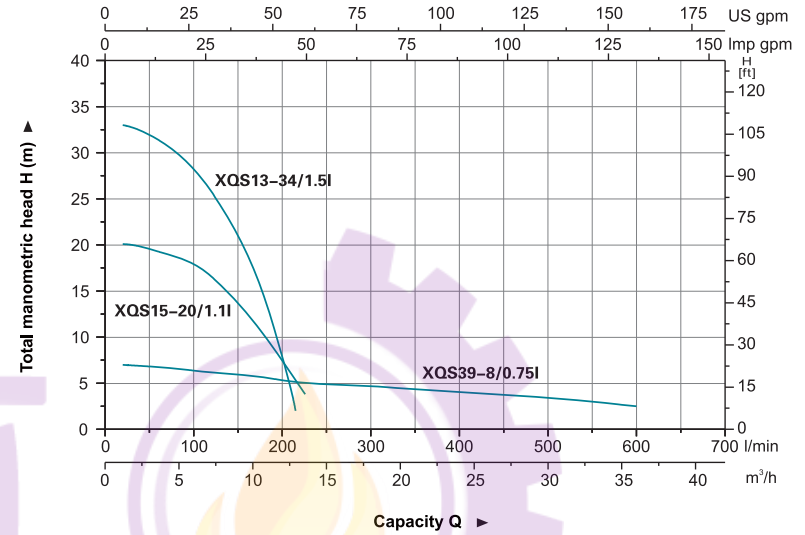
**Motor**

- Copper winding
- Built-in thermal protector
- Stainless steel welded shaft
- Insulation class: B
- Protection class: IP68

**Identification Codes**



**Hydraulic Performance Curves**



**Technical Data**

| Model         | Power |     | Outlet diameter (mm) | Voltage (V/Hz) | Max. flow (l/min) | Max. head (m) | GW (kgs) | Packing size (mm) | Quantity (PCS/20 TEU) |
|---------------|-------|-----|----------------------|----------------|-------------------|---------------|----------|-------------------|-----------------------|
|               | (kW)  | HP  |                      |                |                   |               |          |                   |                       |
| XQS39-8/0.75I | 0,75  | 1,0 | 75                   | 220/50         | 650               | 8             | 21,6     | 580x320x250       | 684                   |
| XQS15-20/1.1I | 1,1   | 1,5 | 40,32,25             | 220/50         | 250               | 20            | 21,5     | 510x290x220       | 880                   |
| XQS13-34/1.5I | 1,5   | 2,0 | 40,32,25             | 220/50         | 216               | 34            | 25,3     | 580x320x250       | 648                   |

**Materials Table**

| No. | Part              | Material        | No. | Part              | Material        |
|-----|-------------------|-----------------|-----|-------------------|-----------------|
| 1   | Bolt              | Stainless steel | 26  | Thermal protector |                 |
| 2   | Stretching washer | Stainless steel | 27  | O-ring            | NBR             |
| 3   | Washer            | Stainless steel | 28  | Stator            |                 |
| 4   | Bolt              | Stainless steel | 29  | Wave washer       | 65Mn            |
| 5   | Washer            | Stainless steel | 30  | Ball bearing      |                 |
| 6   | Handle            | Stainless steel | 31  | Rotor             |                 |
| 7   | Nut               | Stainless steel | 32  | Ball bearing      |                 |
| 8   | Protector         | NR              | 33  | Lower cover       | HT200           |
| 9   | Cable presser     | Stainless steel | 34  | Oil seal          |                 |
| 10  | Washer            | Stainless steel | 35  | Connector         | ABS             |
| 11  | Screw             | Stainless steel | 36  | O-ring            | NBR             |
| 12  | Bolt              | Stainless steel | 37  | Pump body         | HT200           |
| 13  | O-ring            | NBR             | 38  | Mechanical seal   | Carbon/Ceramic  |
| 14  | Screw             | Stainless steel | 39  | Impeller          | HT200           |
| 15  | Flange            | Stainless steel | 40  | Nut               | Stainless steel |
| 16  | Cable             |                 | 41  | O-ring            | NBR             |
| 17  | Cable protector   | CR              | 42  | Pump body         | HT200           |
| 18  | Capacitor cover   | HT200           | 43  | Washer            | Stainless steel |
| 19  | Capacitor         |                 | 44  | Screw             | Stainless steel |
| 20  | O-ring            | NBR             | 45  | Filter mesh       | Steel           |
| 21  | Cable holder      | NBR             | 46  | Washer            | Stainless steel |
| 22  | Screw             | CuZn40          | 47  | Screw             | Stainless steel |
| 23  | Stretching washer | 65Mn            | 48  | Stretching washer | Stainless steel |
| 24  | Washer            | CuZn40          | 49  | Float switch      |                 |
| 25  | Upper cover       | HT200           |     |                   |                 |

**Dimension**

| Model         | DN     | L (mm) | W (mm) | H (mm) |
|---------------|--------|--------|--------|--------|
| XQS39-8/0.75I | 2 1/2" | 207    | 109    | 500    |
| XQS15-20/1.1I | 1 1/4" | 238    | 177    | 460    |
| XQS13-34/1.5I | 1 1/4" | 250    | 205    | 512    |

