



WATER TREATMENT SYSTEM



HIGH-RISE WATER SUPPLY



AGRICULTURAL IRRIGATION

VERTICAL MULTISTAGE CENTRIFUGAL PUMP

High efficiency energy saving



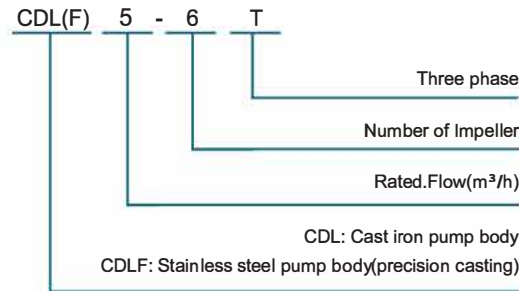
CDL(F)-50HZ

NO. 440, Motahari St. Tehran, Iran
E-MAIL: INFO@PARSWS.COM

VERTICAL MULTISTAGE CENTRIFUGAL PUMP



MODEL INSTRUCTION



CDL(F) series vertical multistage centrifugal pump under low- noise and less- vibration and durability. Insulation class F, protection IP55, continuous duty; Single- phase with thermal protector to ensure safety and convenience.(CDL with cast iron pump body, CDLF with stainless steel pump body.)

PUMP CONFIGURATION

- Pump body: **Cast iron/Stainless steel;**
- Impeller: **Stainless steel;**
- Motor shaft: **Stainless steel;**
- Mechanical seal: selective for normal water, pure water or hot watertype;

PUMP FEATURES

- The standard configuration is International standard (IEC60034-30) IE3 energy efficiency;
- high strength, no deformation, long life, safe and reliable usage;
- low- noise, less- vibration, durability;
- Single- phase with thermal protector.

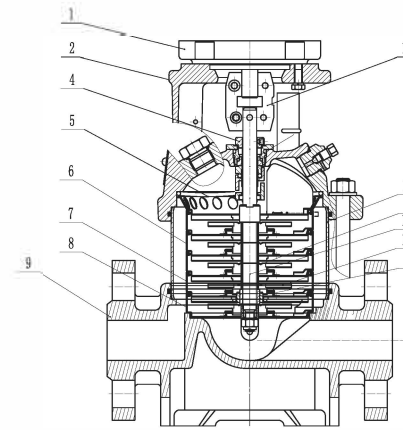
APPLICATION LIMITS

- Low viscosity, non-flammable, explosive, easy vaporization, no solid particles(<0.2mm) and fiber liquid.
- Liquid temperature -20 °C ~120 °C;
- The PH value of the medium is between 5-10

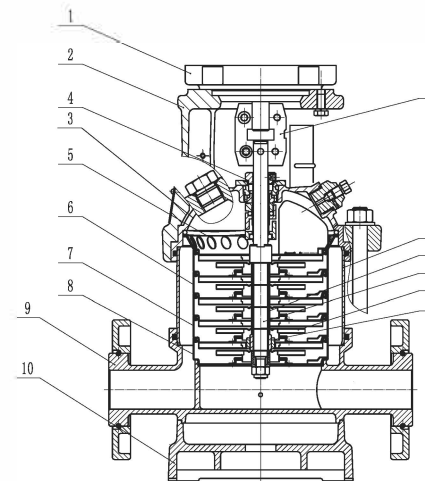
TECHNICAL SPECIFICATIONS

Max.Power	Flow range	Max working pressure	Max liquid temperature	Max ambient temperature
Up to 110kW	1~200m ³ /h	28 bar	+120°C	+40°C

CDL(F)1,2,3,4,5 Sectional drawing



CDL

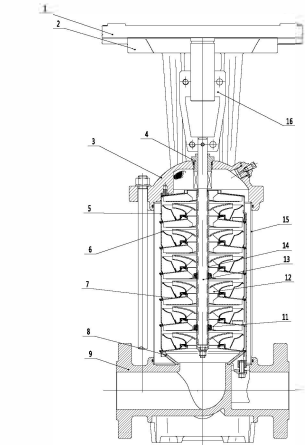


CDLF

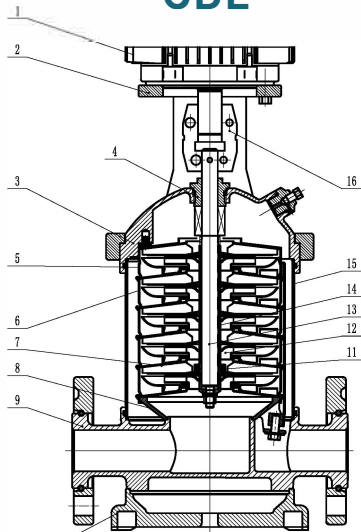
Material CDL

No.	Description	Material	AISI/ASTM
1	Motor		
2	Connecting base	Cast iron	ASTM25B
4	Mechanical seal		
5	Outlet section	S.S	AISI304
6	Stage casing	S.S	AISI304
7	Stage casing with bearing	S.S	AISI304
8	Inlet section	S.S	AISI304
11	Bearing	Tungsten carbide	
12	Impeller	S.S	AISI304
13	Shaft	S.S	AISI304 AISI316
14	Shaft sleeve	S.S	AISI304
15	barrel	S.S	AISI304
16	Coupling	Cast iron	
CDLF			
3	Pump cover	S.S	AISI304
9	Pump body	S.S	AISI304
10	Base	Cast iron	ASTM25B
CDL			
9	Pump body	Cast iron	ASTM25B

CDL(F)8,10,12,15,16,20 Sectional drawing



CDL

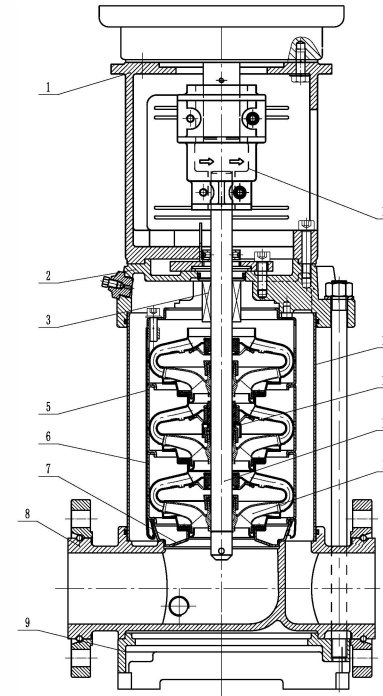


CDLF

Material CDL

No.	Description	Material	AISI/ASTM
1	Motor		
2	Connecting base	Cast iron	ASTM25B
4	Mechanical seal		
5	Outlet section	S.S	AISI304
6	Stage casing	S.S	AISI304
7	Stage casing with bearing	S.S	AISI304
8	Intlet section	S.S	AISI304
11	Bearing	Tungsten carbide	
12	Impeller	S.S	AISI304
13	Shaft	S.S	AISI304 AISI316
14	Shaft sleeve	S.S	AISI304
15	barrel	S.S	AISI304
16	Coupling	Cast iron	
CDLF			
3	Pump cover	S.S	AISI304
9	Pump body	S.S	AISI304
10	Base	Cast iron	ASTM25B
CDL			
9	Pump body	Cast iron	ASTM25B

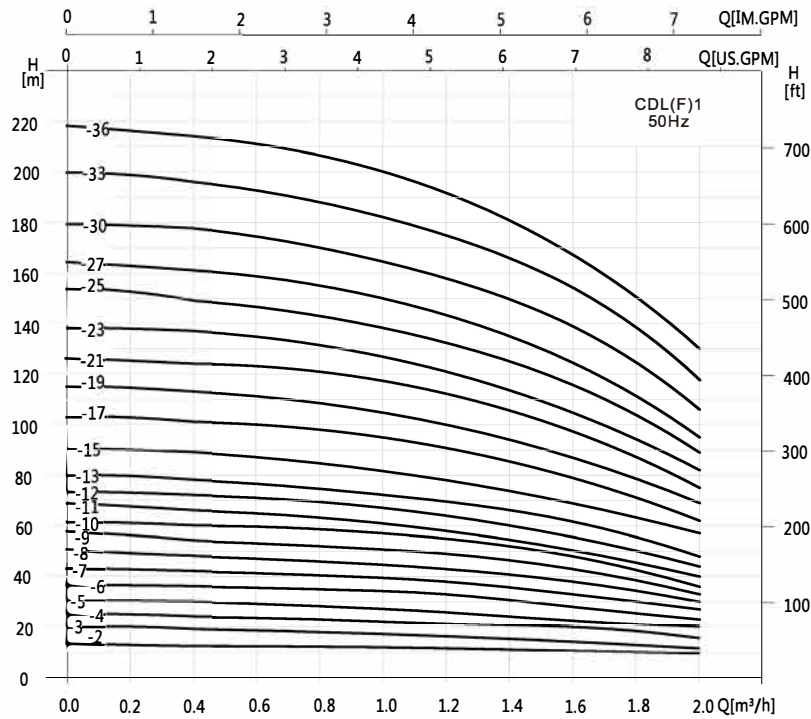
CDL(F)32,45,64,90,120,150,200 Sectional drawing



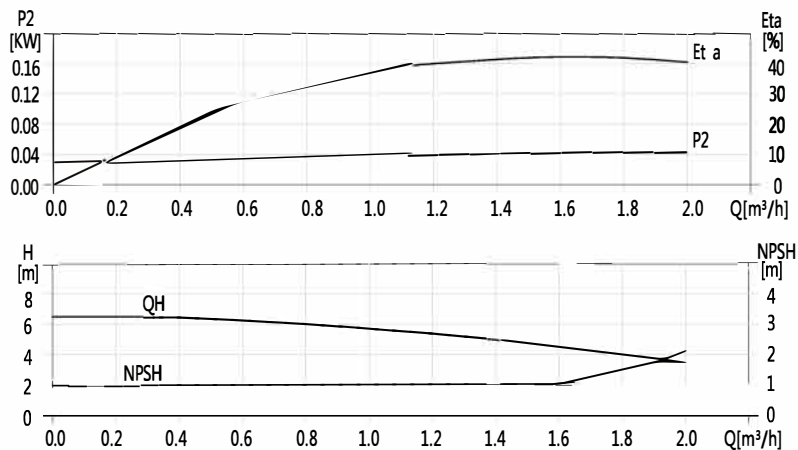
Material CDL

No.	Description	Material	AISI/ASTM
1	Connecting base	Cast iron	ASTM25B
3	Mechanical seal		
5	Stage casing with bearing	S.S	AISI304
6	Stage casing	S.S	AISI304
7	Intlet section	S.S	AISI304
9	Base	Cast iron	ASTM25B
10	Bearing	Tungsten carbide	
11	Impeller	S.S	AISI304
12	Shaft	S.S	AISI304 AISI316
13	Bearing sleeve	Tungsten carbide	
15	barrel	S.S	AISI304
16	Coupling	Cast iron	
CDLF			
2	Pump cover	S.S	AISI304
8	Pump body	S.S	AISI304
CDL			
2	Pump cover	Cast iron	ASTM25B
8	Pump body	Cast iron	ASTM25B

PERFORMANCE CHART



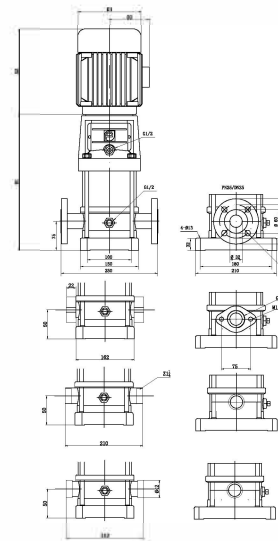
* P2 means the power of a single impeller.



* With "F" means the water inlet and outlet section material is stainless steel, without "F" is iron. T means three-phase.

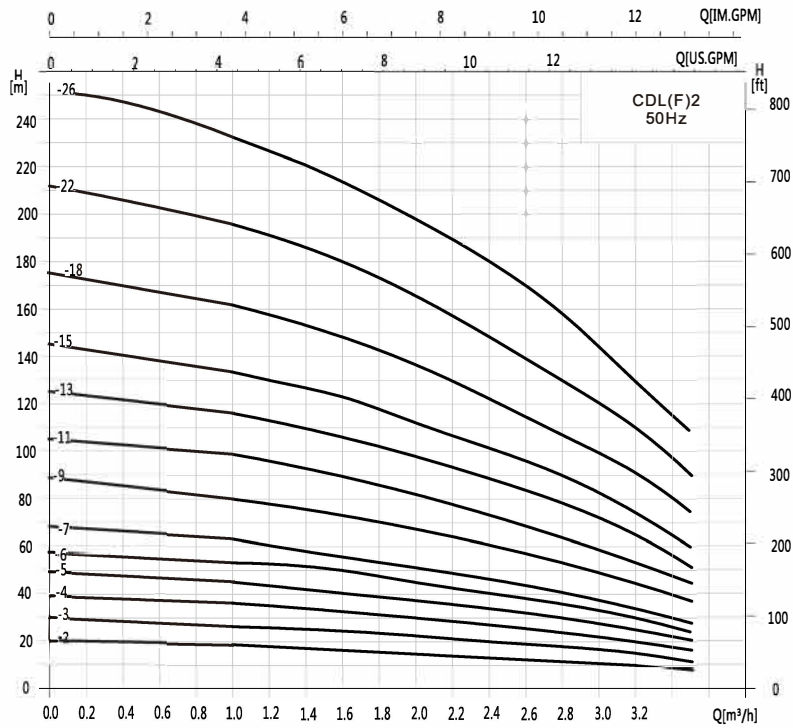
Model	Power (kW)	Q (m³/h) Q (L/min)	0.4	0.6	0.8	1	1.2	1.4	1.6	1.8	2.0
			6.7	10	13.3	16.7	20	23.3	26.7	30	33.3
CDL(F)1-2(T)	0.37		13	12.5	12	11.5	11	10.5	10	9.5	9
CDL(F)1-3(T)	0.37		19	18	17.5	17	16.5	16	15	14	12
CDL(F)1-4(T)	0.37		24	23.5	23	22.5	21.5	21	19	18	16
CDL(F)1-5(T)	0.37		30	29.6	29	28	27	26	24	22	20
CDL(F)1-6(T)	0.37		36	35.5	35	33.5	33	31	28	26	23
CDL(F)1-7(T)	0.37		42	41	40.5	39	38	36	33	30	27
CDL(F)1-8(T)	0.55		48	47	46	45	43	41	38	34	30
CDL(F)1-9(T)	0.55		54	53	52	51	49	46	43	39	33
CDL(F)1-10(T)	0.55		60	59	58	57	54	51	48	43	36
CDL(F)1-11(T)	0.55		66	65	63	61	59	56	52	47	40
CDL(F)1-12(T)	0.75		72	71	69	67	64	61	57	51	44
CDL(F)1-13(T)	0.75		78	77	75	73	69	66	62	55	47
CDL(F)1-15(T)	0.75		89	88	86	84	79	76	71	63	55
CDL(F)1-17(T)	1.1		101	99	97	95	89	86	80	71	62
CDL(F)1-19(T)	1.1		113	110	108	106	99	96	89	79	69
CDL(F)1-21(T)	1.1		124	122	120	117	110	106	98	87	70
CDL(F)1-23(T)	1.1		137	133	131	128	121	116	107	96	82
CDL(F)1-25(T)	1.5		149	145	143	139	131	126	116	104	89
CDL(F)1-27(T)	1.5		161	157	155	150	141	136	125	112	95
CDL(F)1-30(T)	1.5		178	175	171	166	157	150	139	124	106
CDL(F)1-33(T)	2.2		196	192	188	183	173	165	154	137	118
CDL(F)1-36(T)	2.2		214	210	205	200	190	181	169	151	130

Installation dimensions

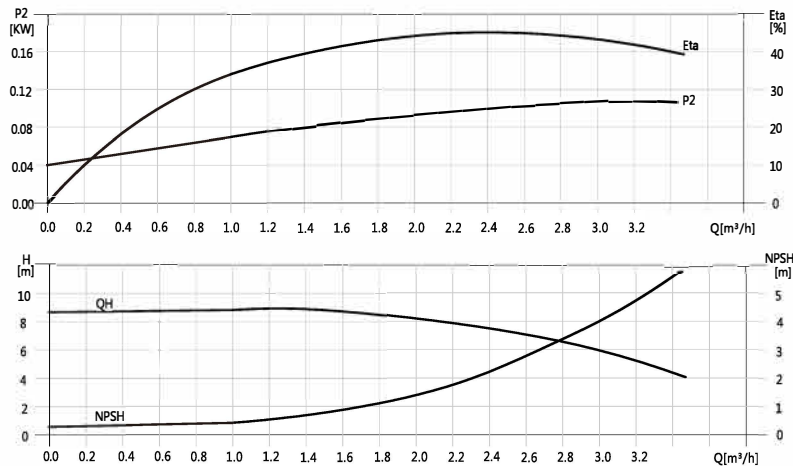


Model	Dimensions(mm)					N.W kg
	B1	B2	B1+B2	D1	D2	
CDL(F)1-2(T)	279		489			21
CDL(F)1-3(T)	297		507			21
CDL(F)1-4(T)	315		525			22
CDL(F)1-5(T)	333		543			22
CDL(F)1-6(T)	351	210	561	148	117	23
CDL(F)1-7(T)	369		579			23
CDL(F)1-8(T)	389		598			24
CDL(F)1-9(T)	405		615			24
CDL(F)1-10(T)	423		633			25
CDL(F)1-11(T)	441		651			25
CDL(F)1-12(T)	459	255	714	170	142	26
CDL(F)1-13(T)	477		732			26
CDL(F)1-15(T)	513		768			27
CDL(F)1-17(T)	549		804			28
CDL(F)1-19(T)	585		840			29
CDL(F)1-21(T)	621		876			30
CDL(F)1-23(T)	657		912			31
CDL(F)1-25(T)	703	290	993	190	155	40
CDL(F)1-27(T)	739		1029			41
CDL(F)1-30(T)	793		1083			42
CDL(F)1-33(T)	847		1137			44
CDL(F)1-36(T)	901		1191			45

PERFORMANCE CHART



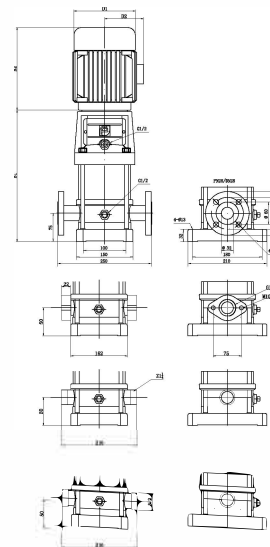
* P2 means the power of a single impeller.



* With "F" means the water inlet and outlet section material is stainless steel, without "F" is iron. T means three-phase.

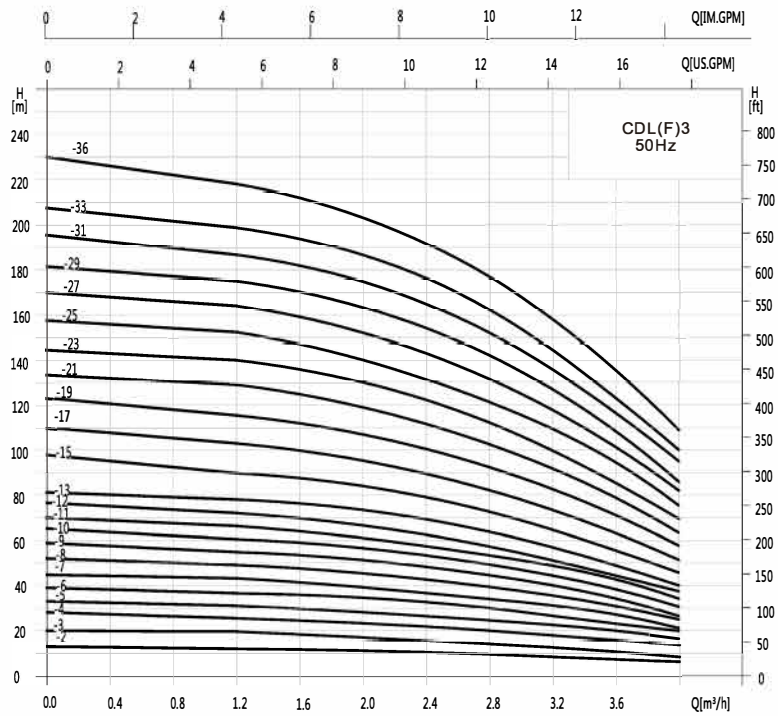
Model	Power (kW)	Q (m³/h) Q (L/min)	1	1.2	1.6	2	2.4	2.8	3.2	3.5
			CDL(F)2-2(T)	0.37	16.7	18	17	16	15	13
CDL(F)2-3(T)	0.37	27	27	26	24	22	20	18	15	12
CDL(F)2-4(T)	0.55	36	36	35	33	30	26	24	20	16
CDL(F)2-5(T)	0.55	45	45	43	40	37	33	30	24	20
CDL(F)2-6(T)	0.75	53	53	52	50	45	40	36	30	24
CDL(F)2-7(T)	0.75	63	63	61	57	52	47	41	35	28
CDL(F)2-9(T)	1.1	80	80	78	73	67	61	54	45	37
CDL(F)2-11(T)	1.1	98	98	95	89	82	73	64	54	44
CDL(F)2-13(T)	1.5	116	116	114	106	98	89	78	65	52
CDL(F)2-15(T)	1.5	134	134	130	123	112	100	90	73	60
CDL(F)2-18(T)	2.2	161	161	157	148	136	121	108	91	76
CDL(F)2-22(T)	2.2	197	197	192	180	165	148	130	110	90
CDL(F)2-26T	3	232	232	228	214	198	179	158	130	110

Installation dimensions

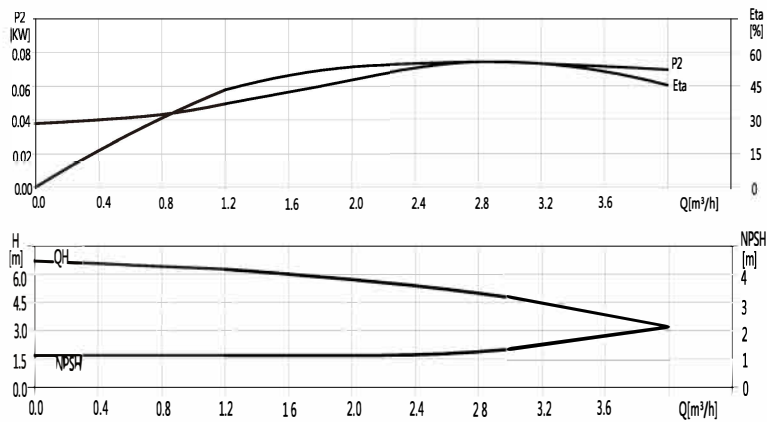


Model	Dimensions(mm)					N.W kg
	B1	B2	B1+B2	D1	D2	
CDL(F)2-2(T)	279	210	489	148	117	20
CDL(F)2-3(T)	297		507			21
CDL(F)2-4(T)	315		525			22
CDL(F)2-5(T)	333	255	543	170	142	23
CDL(F)2-6(T)	351		606			25
CDL(F)2-7(T)	369		624			26
CDL(F)2-9(T)	405	290	660	190	155	30
CDL(F)2-11(T)	441		696			31
CDL(F)2-13(T)	477		767			35
CDL(F)2-15(T)	513	325	803	197	165	36
CDL(F)2-18(T)	567		857			40
CDL(F)2-22(T)	639		929			45
CDL(F)2-26T	711	1036	197	165	50	

PERFORMANCE CHART



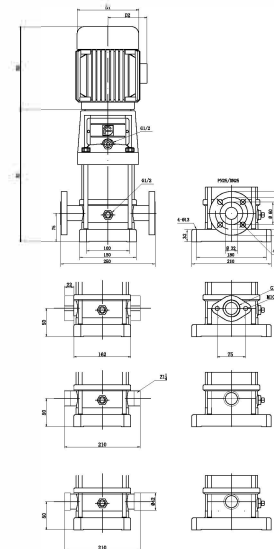
* P2 means the power of a single impeller.



* With "F" means the water inlet and outlet section material is stainless steel, without "F" is iron. T means three-phase.

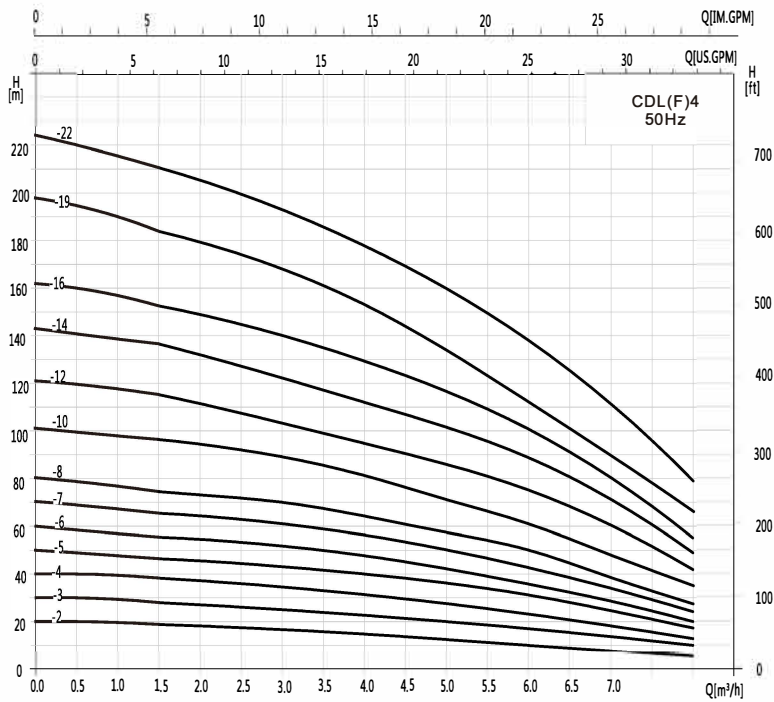
Model	Power (kW)	Q (m³/h)	Q (L/min)											
			1.2	1.6	2	2.4	2.8	3	3.2	3.6	4			
CDL(F)3-2(T)	0.37	20	12.5	11.5	11	10.5	10	9	8	7	6			
CDL(F)3-3(T)	0.37	25	19	18.5	17.5	16.5	15	14	13	11	9			
CDL(F)3-4(T)	0.37	30	25	24	23	21.5	20	119	18	15	12			
CDL(F)3-5(T)	0.37	35	31	30	29	27	25	23	22	19	16			
CDL(F)3-6(T)	0.55	40	36	35	34	32	30	28	27	23	19			
CDL(F)3-7(T)	0.55	45	43	41	39	37	34	32	31	27	22			
CDL(F)3-8(T)	0.75	50	49	47	45	43	39	37	35	31	25			
CDL(F)3-9(T)	0.75	55	55	53	51	48	45	42	40	35	28			
CDL(F)3-10(T)	0.75	60	61	59	57	54	50	47	45	39	31			
CDL(F)3-11(T)	1.1	65	67	64	61	58	54	51	49	42	34			
CDL(F)3-12(T)	1.1	70	73	70	67	63	58	55	52	45	37			
CDL(F)3-13(T)	1.1	75	78	76	73	69	64	60	57	49	40			
CDL(F)3-15(T)	1.1	80	90	88	84	79	73	69	66	57	46			
CDL(F)3-17(T)	1.5	85	103	100	96	90	83	79	75	64	52			
CDL(F)3-19(T)	1.5	90	115	112	107	100	92	88	83	72	58			
CDL(F)3-21(T)	2.2	95	128	124	119	112	102	98	91	79	64			
CDL(F)3-23(T)	2.2	100	140	135	130	122	112	107	100	86	70			
CDL(F)3-25(T)	2.2	105	151	147	141	131	122	116	109	94	76			
CDL(F)3-27(T)	2.2	110	164	159	152	143	132	124	117	101	82			
CDL(F)3-29(T)	2.2	115	175	170	163	153	142	133	126	109	88			
CDL(F)3-31T	3	120	187	182	175	165	153	142	135	116	94			
CDL(F)3-33T	3	125	199	194	187	176	163	151	145	125	100			
CDL(F)3-36T	3	130	218	212	204	192	178	168	159	137	109			

Installation dimensions

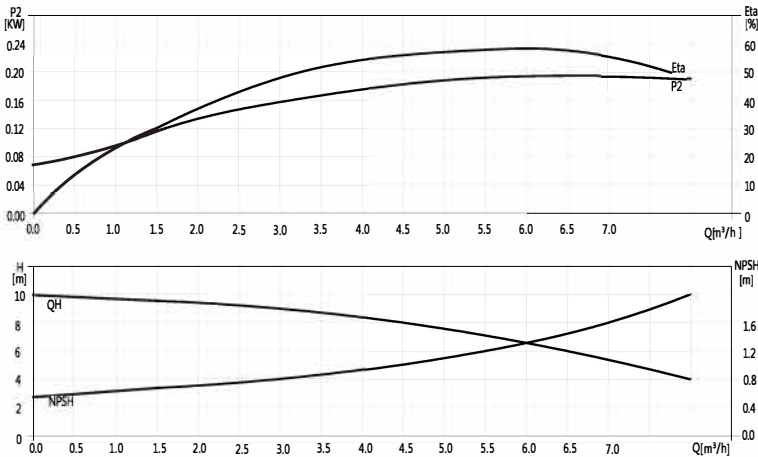


Model	Dimensions(mm)					N.W kg
	B1	B2	B1+B2	D1	D2	
CDL(F)3-2(T)	279	210	489	148	117	21
CDL(F)3-3(T)	297		507			21
CDL(F)3-4(T)	315		525			22
CDL(F)3-5(T)	333		543			22
CDL(F)3-6(T)	351	255	561	170	142	23
CDL(F)3-7(T)	369		579			23
CDL(F)3-8(T)	389		642			24
CDL(F)3-9(T)	405		660			24
CDL(F)3-10(T)	423	290	678	190	155	25
CDL(F)3-11(T)	441		696			25
CDL(F)3-12(T)	459		714			26
CDL(F)3-13(T)	477		732			26
CDL(F)3-15(T)	513	325	768	197	165	27
CDL(F)3-17(T)	559		849			28
CDL(F)3-19(T)	595		885			29
CDL(F)3-21(T)	631		921			30
CDL(F)3-23(T)	667	325	957	197	165	31
CDL(F)3-25(T)	713		1003			40
CDL(F)3-27(T)	749		1039			41
CDL(F)3-29(T)	785		1075			42
CDL(F)3-31T	833	325	1158	197	165	44
CDL(F)3-33T	869		1194			45
CDL(F)3-36T	923		1248			

PERFORMANCE CHART



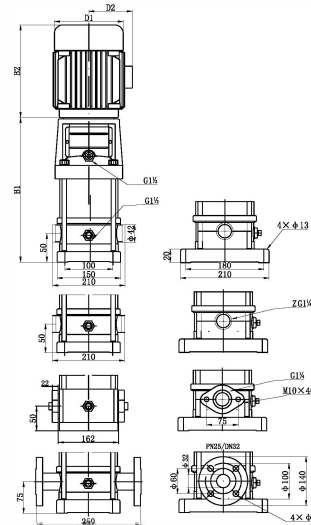
* P2 means the power of a single impeller.



* With "F" means the water inlet and outlet section material is stainless steel, without "F" is iron. T means three-phase.

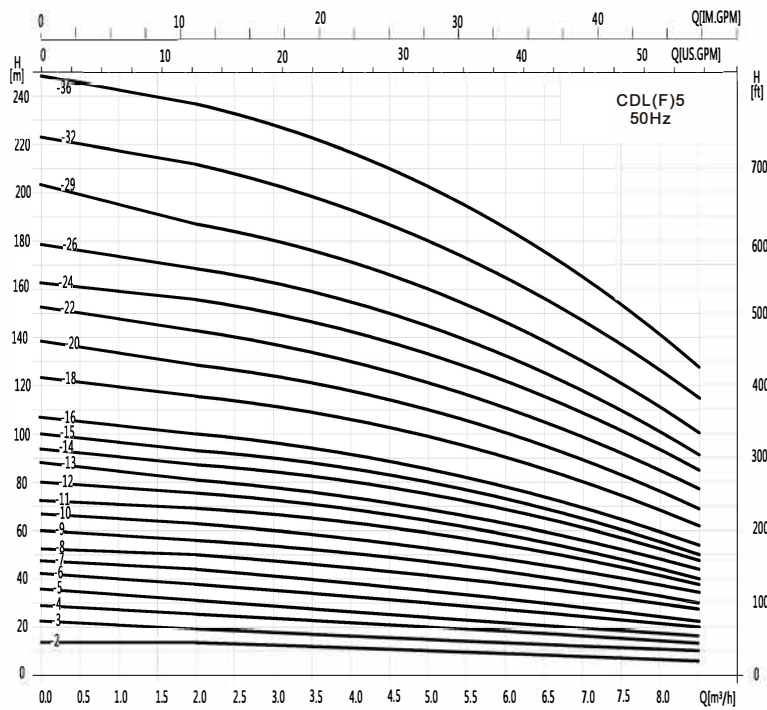
Model	Power (kW)	Q (m³/h) Q (L/min)	1.5	2	3	4	5	6	7	8
			25	33.3	50	67.7	83.3	100	116.7	133.3
CDL(F)4-2(T)	0.37		19	18	17	15	13	10	8	6
CDL(F)4-3(T)	0.55		28	27	26	24	20	18	13	10
CDL(F)4-4(T)	0.75		37	36	34	32	27	24	19	13
CDL(F)4-5(T)	1.1		47	45	43	40	34	31	23	17
CDL(F)4-6(T)	1.1		56	54	52	48	41	37	28	20
CDL(F)4-7(T)	1.5		66	63	61	56	48	43	33	24
CDL(F)4-8(T)	1.5		74	72	70	64	55	50	38	27
CDL(F)4-10(T)	2.2		96	90	87	81	71	62	48	34
CDL(F)4-12(T)	2.2		114	108	104	95	85	75	58	41
CDL(F)4-14T	3		136	126	122	112	101	89	69	48
CDL(F)4-16T	3		152	144	140	129	115	101	78	55
CDL(F)4-19T	4		183	171	168	153	137	122	93	67
CDL(F)4-22T	4		211	200	192	178	160	138	108	79

Installation dimensions

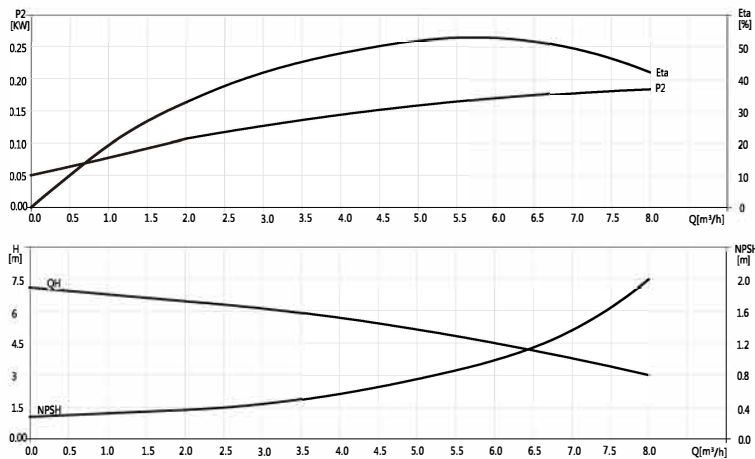


Model	Dimensions(mm)					N.W kg
	B1	B2	B1+B2	D1	D2	
CDL(F)4-2(T)	279	210	507	148	117	22
CDL(F)4-3(T)	324		534			23
CDL(F)4-4(T)	351	255	606	170	142	24
CDL(F)4-5(T)	378		633			26
CDL(F)4-6(T)	405		660			27
CDL(F)4-7(T)	442	290	732	190	155	31
CDL(F)4-8(T)	469		759			32
CDL(F)4-10(T)	523		813			33
CDL(F)4-12(T)	577		867			34
CDL(F)4-14T	643	325	968	197	165	36
CDL(F)4-16T	697		1022			41
CDL(F)4-19T	778	335	1113	230	188	46
CDL(F)4-22T	859		1194			51

PERFORMANCE CHART



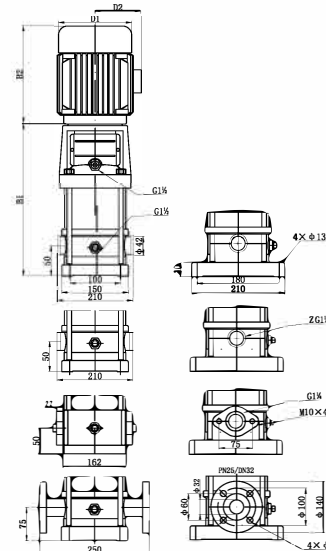
* P2 means the power of a single impeller.



* With "F" means the water inlet and outlet section material is stainless steel, without "F" is iron. T means three-phase.

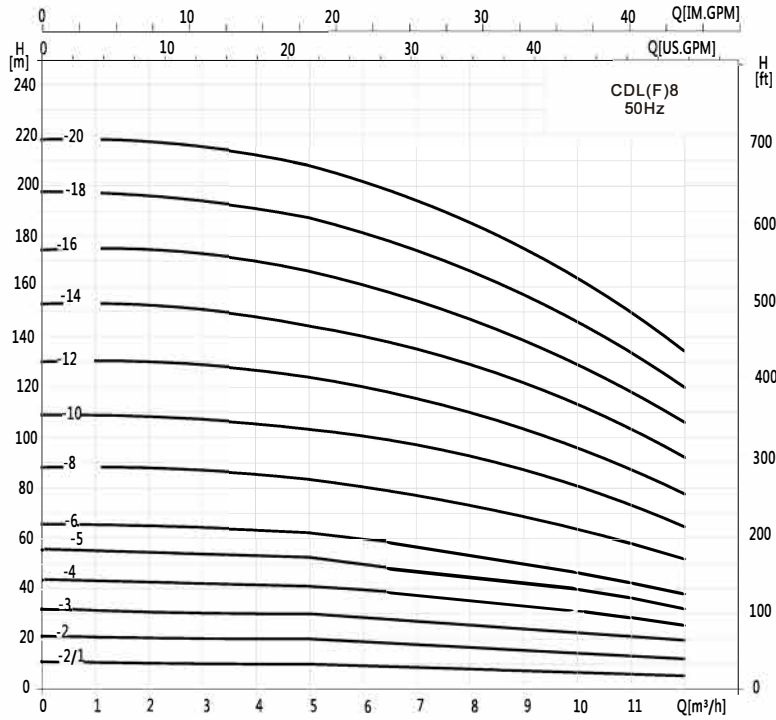
Model	Power (kW)	Q (m³/h) Q (L/min)	2	3	4	5	6	7	8
			CDL(F)5-2(T)	0.37	33.3	13	12	11	10
CDL(F)5-3(T)	0.55	50	19	18	17	15	13	12	10
CDL(F)5-4(T)	0.55	66.7	25	24	22	20	18	16	13
CDL(F)5-5(T)	0.75	83.3	31	30	28	25	23	20	16
CDL(F)5-6(T)	1.1	100	37	36	34	30	27	24	20
CDL(F)5-7(T)	1.1	116.7	43	41	39	36	33	29	23
CDL(F)5-8(T)	1.1	133.3	50	48	45	42	37	33	27
CDL(F)5-9(T)	1.5	150	56	54	51	48	43	37	30
CDL(F)5-10(T)	1.5	166.7	62	60	57	53	47	41	34
CDL(F)5-11(T)	2.2	183.3	69	66	62	59	52	45	37
CDL(F)5-12(T)	2.2	200	75	72	68	64	57	50	40
CDL(F)5-13(T)	2.2	216.7	81	78	74	69	61	54	44
CDL(F)5-14(T)	2.2	233.3	87	84	79	75	66	58	47
CDL(F)5-15(T)	2.2	250	93	90	85	80	71	62	50
CDL(F)5-16(T)	2.2	266.7	100	96	91	85	76	66	54
CDL(F)5-18T	3	300	115	111	105	99	88	76	62
CDL(F)5-20T	3	333.3	128	123	117	110	97	85	69
CDL(F)5-22T	4	366.7	142	136	129	122	108	94	77
CDL(F)5-24T	4	400	155	149	141	133	118	103	84
CDL(F)5-26T	4	433.3	168	161	153	144	127	111	91
CDL(F)5-29T	4	466.7	187	180	170	160	142	124	101
CDL(F)5-32T	5.5	500	211	203	192	180	160	140	113
CDL(F)5-36T	5.5	566.7	237	228	216	203	180	157	128

Installation dimensions

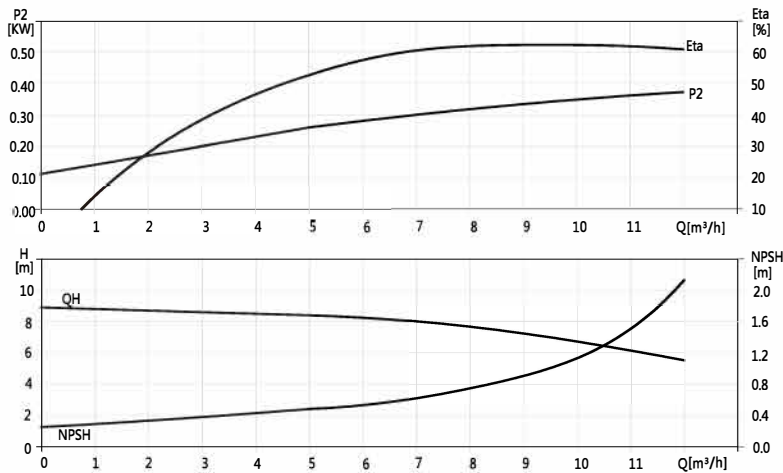


Model	Dimensions(mm)					N.W kg
	B1	B2	B1+B2	D1	D2	
CDL(F)5-2(T)	266	210	476	132	84	22
CDL(F)5-3(T)	293	210	503			23
CDL(F)5-4(T)	330	255	585	150	95	23
CDL(F)5-5(T)	357		612			26
CDL(F)5-6(T)	384	639	28			
CDL(F)5-7(T)	411	666	29			
CDL(F)5-8(T)	448	738	30			
CDL(F)5-9(T)	475	765	36			
CDL(F)5-10(T)	502	792	37			
CDL(F)5-11(T)	529	819	38			
CDL(F)5-12(T)	556	846	39			
CDL(F)5-13(T)	583	873	40			
CDL(F)5-14(T)	610	900	41			
CDL(F)5-15(T)	637	927	42			
CDL(F)5-16(T)	664	954	43			
CDL(F)5-18T	728	1053	46			
CDL(F)5-20T	782	1107	47			
CDL(F)5-22T	836	1171	59			
CDL(F)5-24T	890	1225	61			
CDL(F)5-26T	944	1279	62			
CDL(F)5-29T	1025	1360	64			
CDL(F)5-32T	1125	1556	79			
CDL(F)5-36T	1234	1664	81			

PERFORMANCE CHART



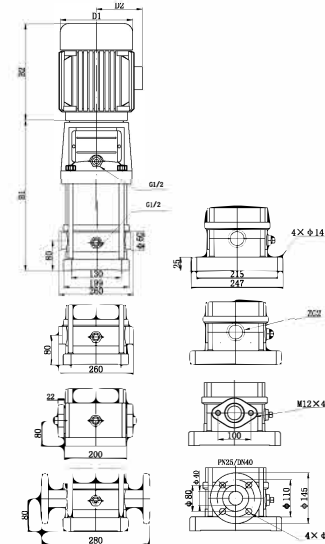
* P2 means the power of a single impeller.



* With "F" means the water inlet and outlet section material is stainless steel, without "F" is iron. T means three-phase.

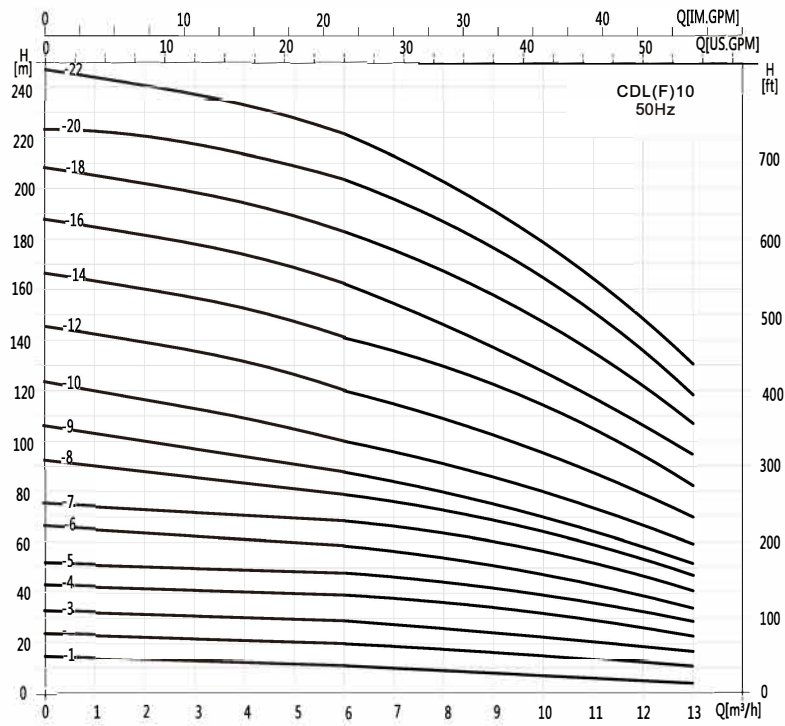
Model	Power (kW)	Q (m³/h) Q (L/min)	5	6	7	8	9	10	11	12
			CDL(F)8-2/1(T)	0.75	83	100	117	133	150	167
CDL(F)8-2(T)	0.75	10	9.5	9.3	9	8.5	8	7	6	
CDL(F)8-3(T)	1.1	20	19.5	19	18	17	16	14	13	
CDL(F)8-4(T)	1.5	30	29.5	28.5	27	25	24	21	19	
CDL(F)8-5(T)	2.2	41	39.5	38	36	34	32	28	26	
CDL(F)8-6(T)	2.2	52	50	48	45	42	40	36	32	
CDL(F)8-8T	3	62	60	57	54	51	48	43	39	
CDL(F)8-10T	4	83	80	77	73	69	65	58	52	
CDL(F)8-12T	4	104	100	97	92	87	81	73	65	
CDL(F)8-14T	5.5	124	120	116	111	104	92	87	78	
CDL(F)8-16T	5.5	145	141	136	130	122	113	102	92	
CDL(F)8-18T	7.5	166	161	156	148	139	130	118	106	
CDL(F)8-20T	7.5	187	182	175	167	157	146	134	120	
		208	202	195	186	175	163	150	135	

Installation dimensions

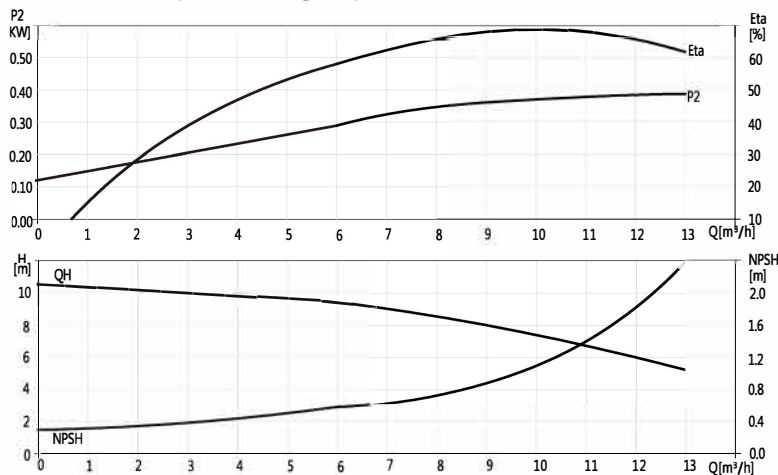


Model	Dimensions(mm)					N.W kg
	B1	B2	B1+B2	D1	D2	
CDL(F)8-2/1(T)	379	255	634	170	142	24
CDL(F)8-2(T)	379		634			24
CDL(F)8-3(T)	409	290	664	190	155	34
CDL(F)8-4(T)	439		729			34
CDL(F)8-5(T)	469		759			44
CDL(F)8-6(T)	499	789	44			
CDL(F)8-8T	569	325	894	197	165	49
CDL(F)8-10T	629	335	964	230	188	59
CDL(F)8-12T	689		1024			59
CDL(F)8-14T	769	430	1199	260	208	84
CDL(F)8-16T	829		1259			94
CDL(F)8-18T	889		1319			94
CDL(F)8-20T	949		1379			94

PERFORMANCE CHART



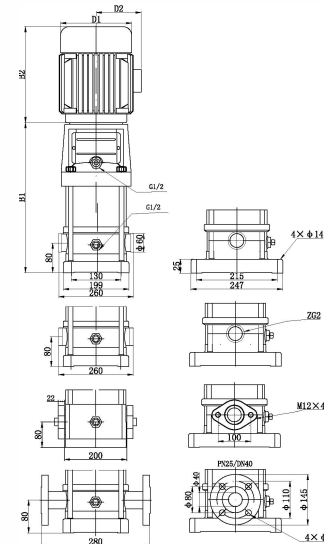
* P2 means the power of a single impeller.



* With "F" means the water inlet and outlet section material is stainless steel, without "F" is iron. T means three-phase.

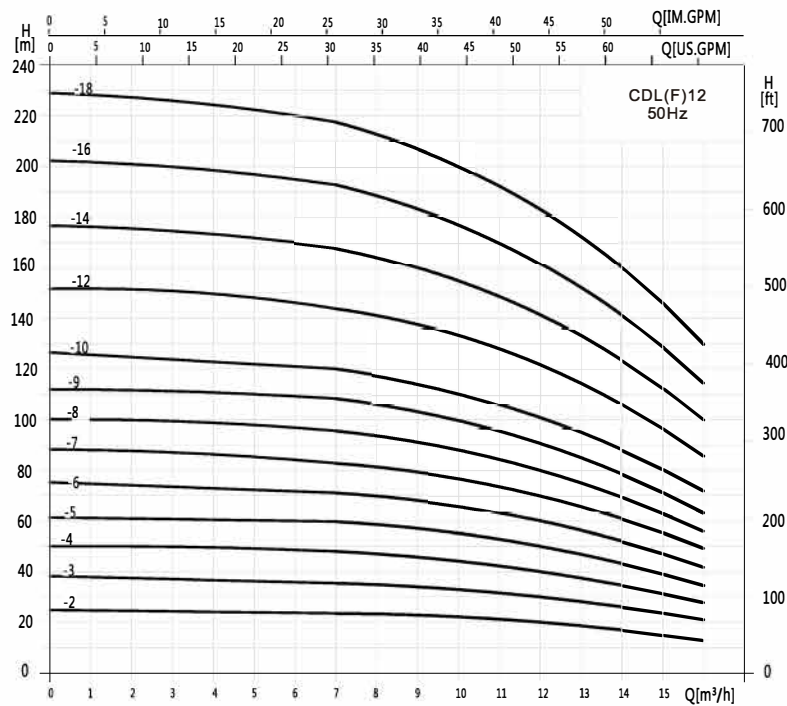
Model	Power (kW)	Q (m³/h) Q (L/min)	6	7	8	9	10	11	12	13
			CDL(F)10-1(T)	0.37	100	117	133	150	167	183
CDL(F)10-2(T)	0.75	11	10	9	8	7	6	5	4	
CDL(F)10-3(T)	1.1	20	19	18	17	16	14	13	11	
CDL(F)10-4(T)	1.5	29	28	27	25	23	21	19	17	
CDL(F)10-5(T)	2.2	39	37	36	34	32	29	26	23	
CDL(F)10-6(T)	2.2	48	48	45	42	39	36	32	29	
CDL(F)10-7T	3	58	56	54	51	47	43	39	34	
CDL(F)10-8T	3	69	66	63	60	56	51	46	41	
CDL(F)10-8T	3	79	76	73	69	64	58	52	46	
CDL(F)10-9T	3	88	85	82	77	70	66	59	52	
CDL(F)10-10T	4	100	96	92	87	80	74	66	59	
CDL(F)10-12T	4	120	115	110	104	95	89	80	70	
CDL(F)10-14T	5.5	141	136	130	123	113	105	94	83	
CDL(F)10-16T	5.5	162	159	149	141	128	120	108	95	
CDL(F)10-18T	7.5	182	175	168	159	147	135	121	107	
CDL(F)10-20T	7.5	202	195	186	176	164	150	135	119	
CDL(F)10-22T	7.5	222	214	205	194	178	165	148	131	

Installation dimensions

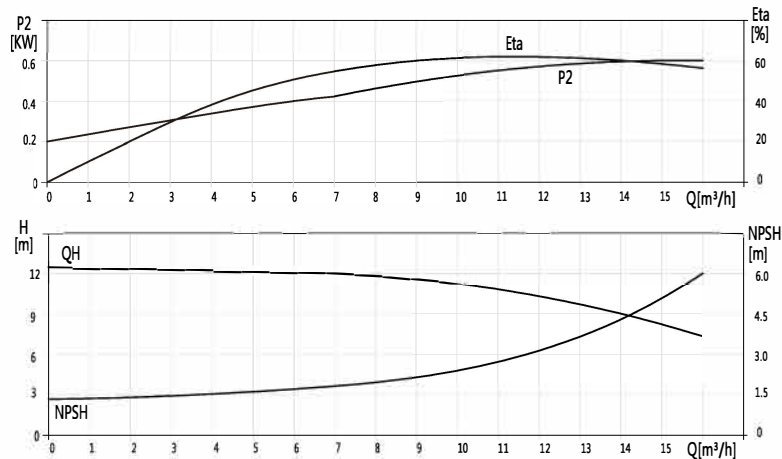


Model	Dimensions(mm)					N.W kg
	B1	B2	B1+B2	D1	D2	
CDL(F)10-1(T)	379	210	589	148	117	32
CDL(F)10-2(T)	379	255	634	170	142	34
CDL(F)10-3(T)	409		664			38
CDL(F)10-4(T)	439	290	729	190	155	46
CDL(F)10-5(T)	469		759			47
CDL(F)10-6(T)	499		789			48
CDL(F)10-7T	539	325	864	197	165	54
CDL(F)10-8T	569		894			55
CDL(F)10-9T	599		924			56
CDL(F)10-10T	629	335	964	230	188	68
CDL(F)10-12T	689		1024			70
CDL(F)10-14T	769	420	1199	260	208	92
CDL(F)10-16T	829		1259			94
CDL(F)10-18T	889		1319			99
CDL(F)10-20T	949		1379			101
CDL(F)10-22T	1009		1439			104

PERFORMANCE CHART



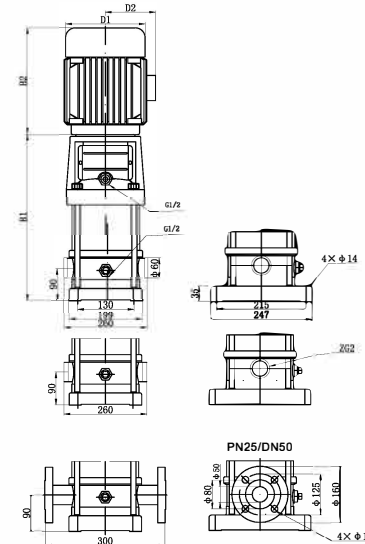
* P2 means the power of a single impeller.



* With "F" means the water inlet and outlet section material is stainless steel, without "F" is iron. T means three-phase.

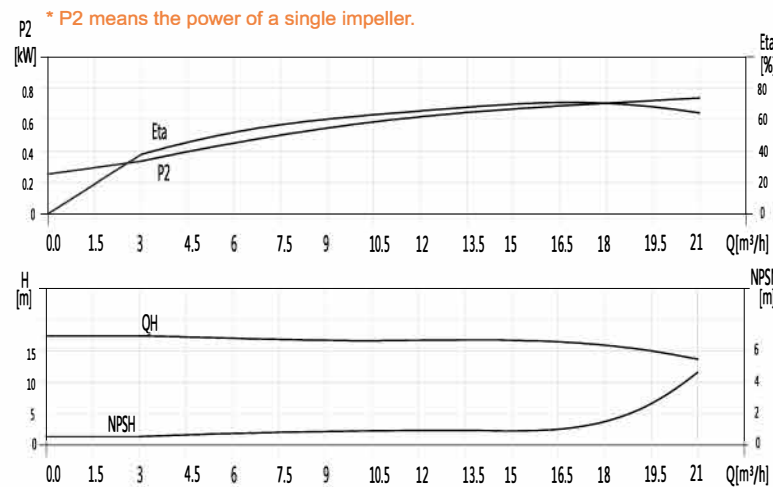
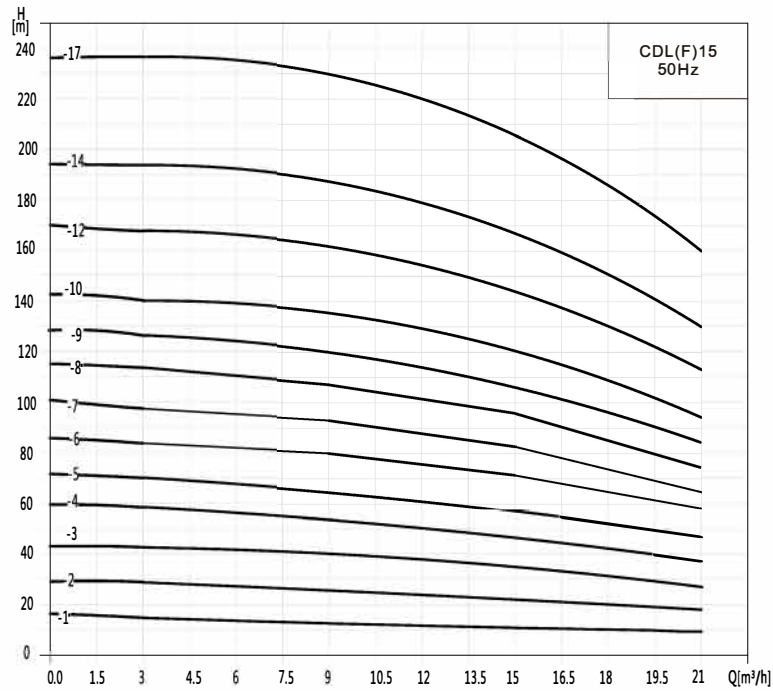
Model	Power (kW)	Q (m³/h) Q (L/min)	7	8	9	10	11	12	13	14	15	16
			CDL(F)12-2(T)	1.5	23.5	23	22.5	22	21	20	18.5	17
CDL(F)12-3(T)	2.2	35.5	35	34	33	31.5	30	28	26	23.5	21	
CDL(F)12-4T	3	47	46	45	44	42	40	37	34	31	28	
CDL(F)12-5T	3	59.5	58	56.5	55	52.8	50	46.5	43	39	35	
CDL(F)12-6T	4	71.5	70	68	66	63	60	56	52	47	42	
CDL(F)12-7T	5.5	83.5	82	79.5	77	73.5	70	65.5	61	55	49	
CDL(F)12-8T	5.5	95.5	94	91	88	84	80	75	70	63	56	
CDL(F)12-9T	5.5	108	106	103	100	95.5	91	85	79	71.5	64	
CDL(F)12-10T	7.5	120	118	114.5	111	106	101	94.5	88	80	72	
CDL(F)12-12T	7.5	143.5	141	137	133	127	121	113.5	106	96	86	
CDL(F)12-14T	11	168	165	160	155	148	141	132.5	124	112	100	
CDL(F)12-16T	11	192.5	189	183.5	178	170	162	152	142	128.5	115	
CDL(F)12-18T	11	217	213	207.5	202	192.5	183	183	160	145	130	

Installation dimensions



Model	Dimensions(mm)					N.W kg
	B1	B2	B1+B2	D1	D2	
CDL(F)12-2(T)	379	290	669	190	155	37
CDL(F)12-3(T)	409		669			40
CDL(F)12-4T	449	325	774	197	165	47
CDL(F)12-5T	479		804			48
CDL(F)12-6T	509	355	844	230	188	58
CDL(F)12-7T	559	430	989	260	208	76
CDL(F)12-8T	589		1019			76
CDL(F)12-9T	619		1049			78
CDL(F)12-10T	649		1079			78
CDL(F)12-12T	709		1139			80
CDL(F)12-14T	859	505	1364	330	255	151
CDL(F)12-16T	919		1424			151
CDL(F)12-18T	979		1484			153

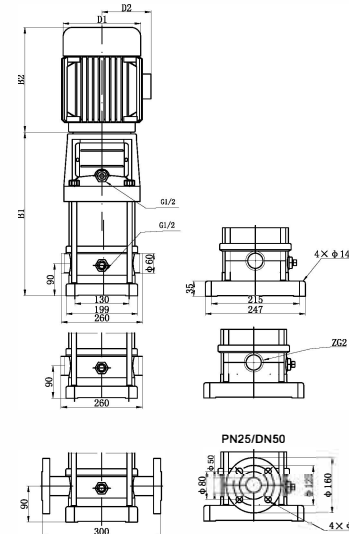
PERFORMANCE CHART



* With "F" means the water inlet and outlet section material is stainless steel, without "F" is iron. T means three-phase.

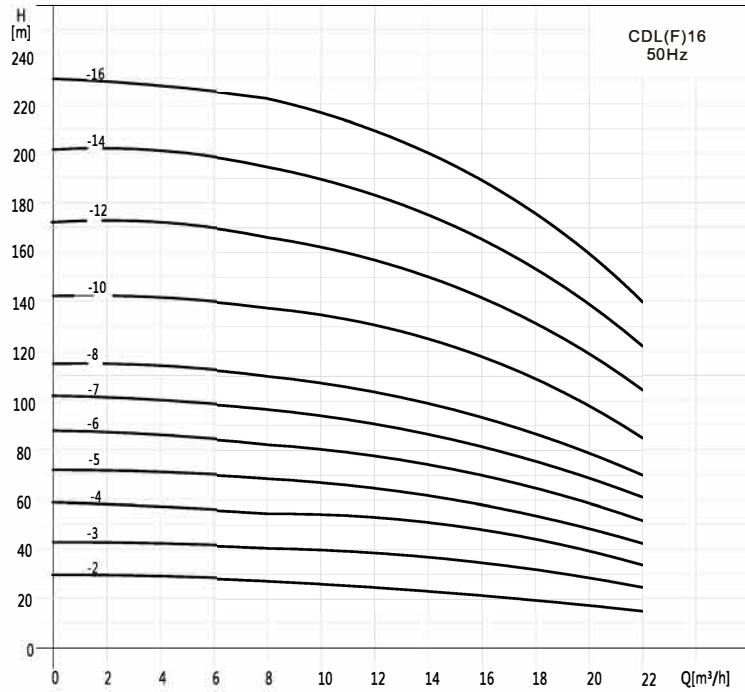
Model	Power (kW)	Q (m³/h) Q (L/min)	3	6	9	12	15	18	21
			CDL(F)15-1(T)	1.1	50	100	150	200	250
CDL(F)15-2(T)	2.2	15	13	13	12	11	10	9	
CDL(F)15-3T	3	28	27	26	25	23	21	18	
CDL(F)15-4T	4	42	41	40	38	35	32	28	
CDL(F)15-5T	4	58	55	55	51	47	43	38	
CDL(F)15-6T	5.5	70	68	66	64	58	53	48	
CDL(F)15-7T	5.5	83	82	80	77	71	64	58	
CDL(F)15-8T	7.5	98	96	94	89	83	75	65	
CDL(F)15-9T	7.5	112	110	108	103	96	86	75	
CDL(F)15-10T	11	125	123	120	115	108	97	84	
CDL(F)15-12T	11	140	138	136	129	120	109	95	
CDL(F)15-14T	11	168	165	162	155	142	130	114	
CDL(F)15-14T	11	194	192	188	180	166	151	130	
CDL(F)15-17T	15	237	234	230	219	205	185	160	

Installation dimensions

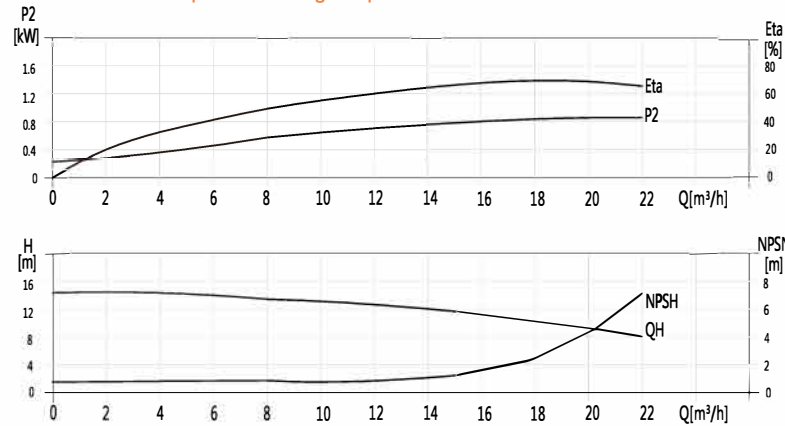


Model	Dimensions(mm)					N.W kg
	B1	B2	B1+B2	D1	D2	
CDL(F)15-1(T)	352	250	602	150	95	42
CDL(F)15-2(T)	413	310	723	168	112	50
CDL(F)15-3T	463	330	793	194	124	55
CDL(F)15-4T	508	357	865	212	142	68
CDL(F)15-5T	553	357	910	212	142	69
CDL(F)15-6T	630	398	1028	259	164	91
CDL(F)15-7T	675	398	1073	259	164	93
CDL(F)15-8T	720	398	1118	259	164	97
CDL(F)15-9T	765	398	1163	259	164	98
CDL(F)15-10T	887	505	1392	330	255	141
CDL(F)15-12T	977	505	1482	330	255	145
CDL(F)15-14T	1067	505	1572	330	255	148
CDL(F)15-17T	1202	505	1707	330	255	158

PERFORMANCE CHART



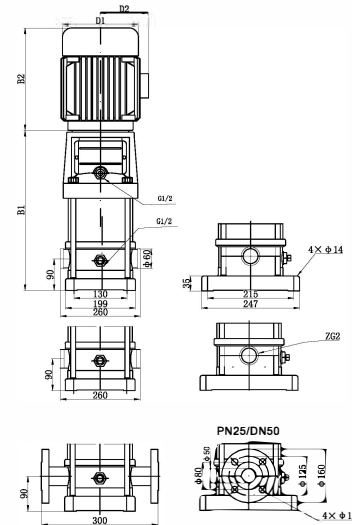
* P2 means the power of a single impeller.



* With "F" means the water inlet and outlet section material is stainless steel, without "F" is iron. T means three-phase.

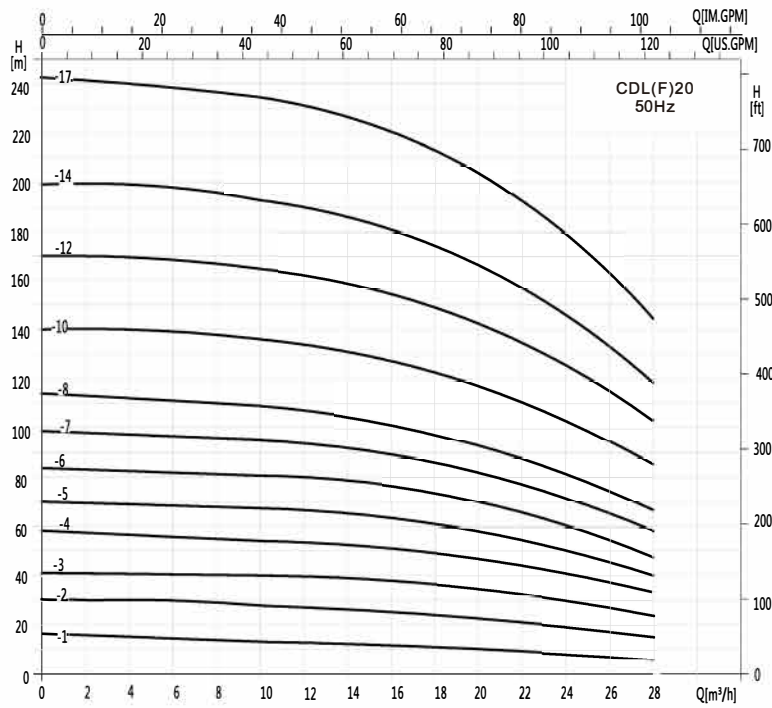
Model	Power (kW)	Q (m³/h) Q (L/min)	8	10	12	14	16	18	20	22
			CDL(F)16-2(T)	2.2	27	26	25	24	22	21
CDL(F)16-3T	3	41	40	38	37	34	32	29	25	
CDL(F)16-4T	4	54	53	52	49	46	43	38	34	
CDL(F)16-5T	5.5	68	67	65	62	58	54	48	43	
CDL(F)16-6T	5.5	82	80	78	74	70	64	58	52	
CDL(F)16-7T	7.5	96	95	91	87	82	76	68	61	
CDL(F)16-8T	7.5	110	108	104	99	94	86	77	70	
CDL(F)16-10T	11	138	136	131	125	118	109	97	87	
CDL(F)16-12T	11	166	162	157	150	141	130	116	105	
CDL(F)16-14T	15	194	190	184	175	166	152	136	122	
CDL(F)16-16T	15	222	217	210	200	189	174	156	140	

Installation dimensions

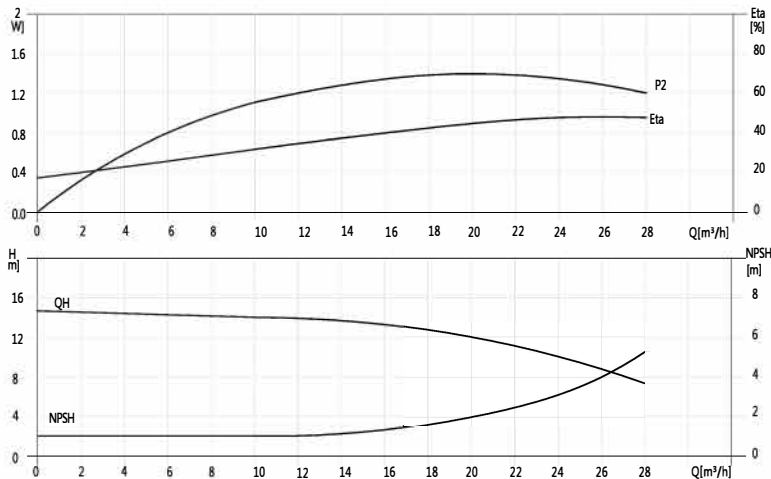


Model	Dimensions(mm)					N.W kg
	B1	B2	B1+B2	D1	D2	
CDL(F)16-2(T)	397	290	687	190	155	42
CDL(F)16-3T	452	345	797	197	165	50
CDL(F)16-4T	497	355	852	230	188	59
CDL(F)16-5T	562	390	952	260	208	76
CDL(F)16-6T	607	390	997	260	208	77
CDL(F)16-7T	652	390	1042	260	208	84
CDL(F)16-8T	697	390	1087	260	208	86
CDL(F)16-10T	875	500	1375	330	255	158
CDL(F)16-12T	965	500	1465	330	255	161
CDL(F)16-14T	1055	500	1555	330	255	174
CDL(F)16-16T	1145	500	1645	330	255	178

PERFORMANCE CHART



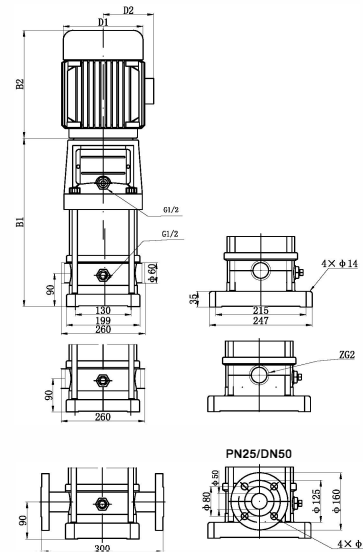
* P2 means the power of a single impeller.



* With "F" means the water inlet and outlet section material is stainless steel, without "F" is iron. T means three-phase.

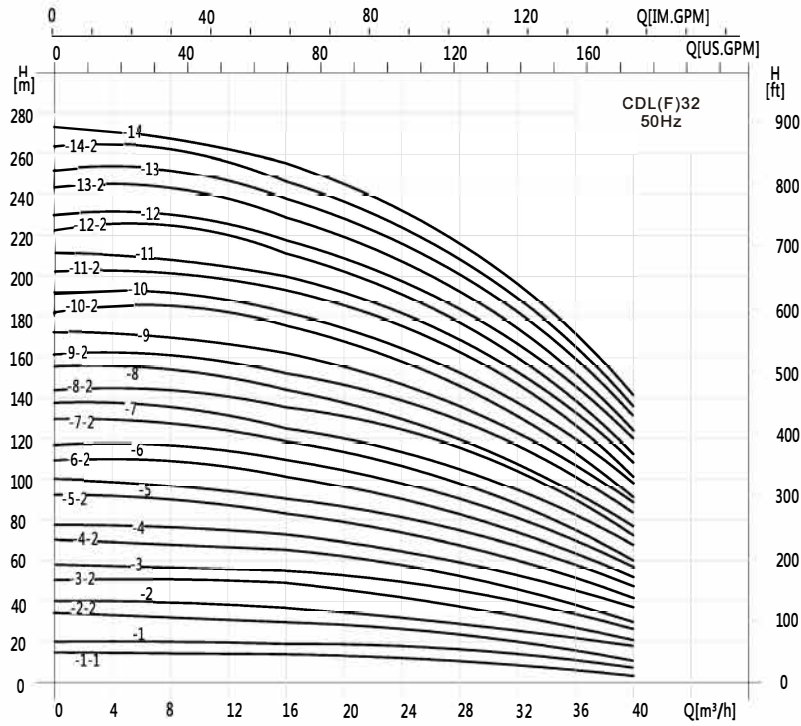
Model	Power (kW)	Q (m³/h) Q (L/min)	10	12	14	16	18	20	22	24	26	28
			167	200	233	267	300	333	367	400	433	467
CDL(F)20-1(T)	1.1		13.5	13	12.5	12	11	10	9	8	7	6
CDL(F)20-2(T)	2.2		27	26.5	26	25	24	23	22	20	18	15
CDL(F)20-3T	4		40	39.5	39	38	37	35	33	30	27	24
CDL(F)20-4T	5.5		54	53	52	51	49	47	44	41	37	33
CDL(F)20-5T	5.5		67	66	64	62	60	58	55	50	45	40
CDL(F)20-6T	7.5		81	79	77	75	73	70	66	61	55	49
CDL(F)20-7T	7.5		95	93	91	89	86	82	77	71	65	58
CDL(F)20-8T	11		109	107	105	102	99	94	89	82	75	67
CDL(F)20-10T	11		136	134	131	128	124	118	111	103	95	85
CDL(F)20-12T	15		164	162	158	154	149	142	133	124	114	102
CDL(F)20-14T	15		192	189	185	180	174	166	156	145	133	119
CDL(F)20-17T	18.5		234	230	225	219	212	202	190	177	162	145

Installation dimensions

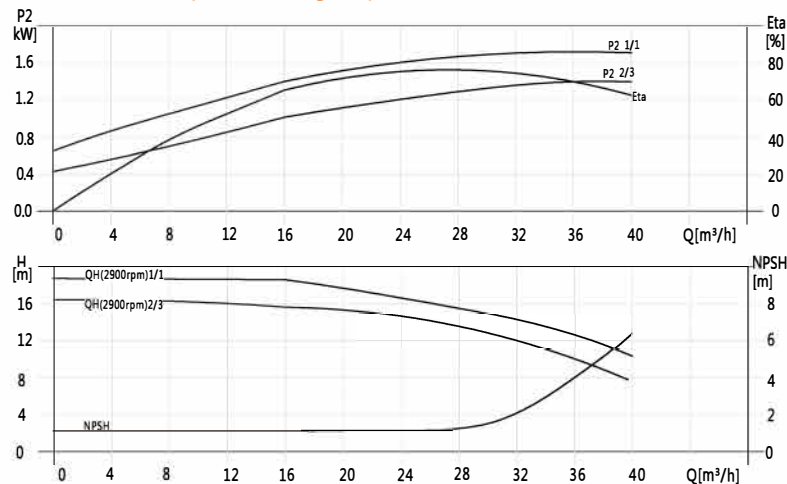


Model	Dimensions(mm)					N.W kg
	B1	B2	B1+B2	D1	D2	
CDL(F)20-1(T)	372	245	617	170	140	33
CDL(F)20-2(T)	372	290	662	190	155	44
CDL(F)20-3T	427	335	762	230	188	58
CDL(F)20-4T	517	430	947	260	208	73
CDL(F)20-5T	562	430	897	260	208	75
CDL(F)20-6T	627	430	1057	260	208	83
CDL(F)20-7T	672	430	1102	260	208	85
CDL(F)20-8T	717	505	1222	330	255	141
CDL(F)20-10T	897	505	1402	330	255	146
CDL(F)20-12T	987	505	1492	330	255	161
CDL(F)20-14T	1077	505	1582	330	255	166
CDL(F)20-17T	1212	560	1772	330	255	191

PERFORMANCE CHART



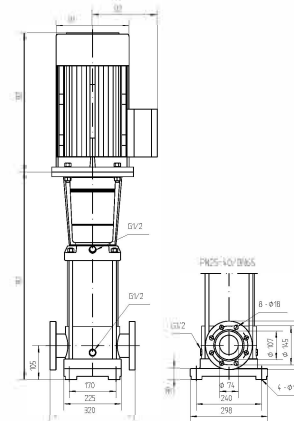
* P2 means the power of a single impeller.



* With "F" means the water inlet and outlet section material is stainless steel, without "F" is iron. T means three-phase.

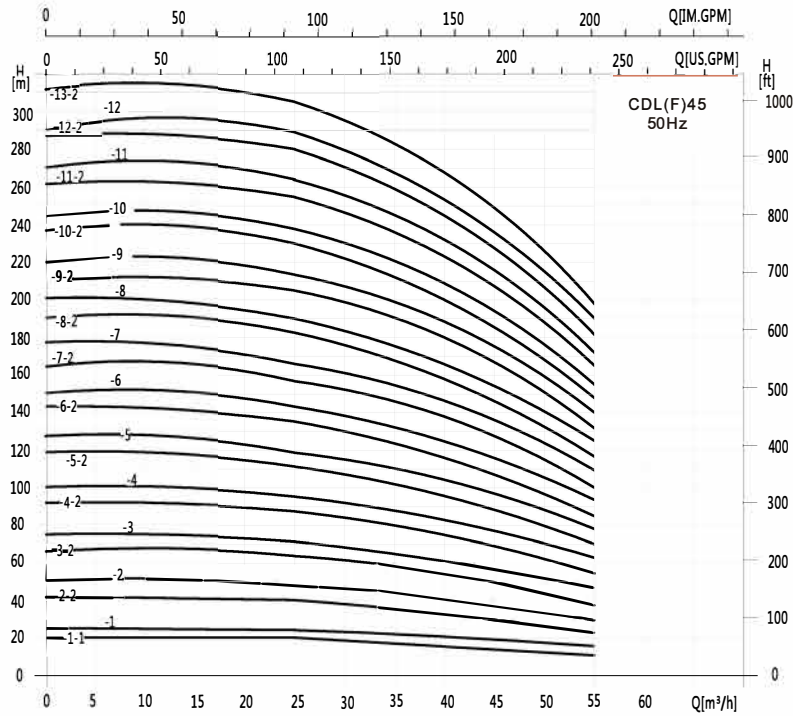
Model	Power (kW)	Q (m³/h)	Q (L/min)							
			16	20	24	28	32	36	40	
CDL(F)32-10-1(T)	1.5	267	14	13	12	11	9	7	4	
CDL(F)32-10(T)	2.2	18	17	15	14	13	11	8		
CDL(F)32-20-2T	3	29	28	26	23	20	16	11		
CDL(F)32-20T	4	36	34	32	29	27	23	18		
CDL(F)32-30-2T	4	47	44	41	38	33	28	21		
CDL(F)32-30T	5.5	54	51	48	44	40	35	27		
CDL(F)32-40-2T	7.5	65	62	58	53	46	40	30		
CDL(F)32-40T	7.5	72	69	65	59	53	47	37		
CDL(F)32-50-2T	11	83	79	74	68	60	52	41		
CDL(F)32-50T	11	90	86	81	74	67	59	47		
CDL(F)32-60-2T	11	101	97	90	83	74	65	51		
CDL(F)32-60T	11	108	104	97	90	81	72	57		
CDL(F)32-70-2T	15	119	114	107	98	88	78	60		
CDL(F)32-70T	15	126	121	113	105	95	85	67		
CDL(F)32-80-2T	15	136	131	123	114	102	90	71		
CDL(F)32-80T	15	144	138	130	120	109	97	77		
CDL(F)32-90-2T	18.5	154	148	140	129	117	102	82		
CDL(F)32-90T	18.5	162	156	147	136	124	109	88		
CDL(F)32-100-2T	18.5	175	166	157	146	131	115	91		
CDL(F)32-100T	18.5	182	173	164	152	138	122	98		
CDL(F)32-110-2T	22	193	184	173	164	146	128	102		
CDL(F)32-110T	22	200	191	180	168	153	135	109		
CDL(F)32-120-2T	22	211	201	189	178	160	140	113		
CDL(F)32-120T	22	218	208	196	184	167	147	120		
CDL(F)32-130-2T	30	230	218	206	193	174	153	124		
CDL(F)32-130T	30	237	225	213	200	181	160	131		
CDL(F)32-140-2T	30	247	235	222	210	189	165	135		
CDL(F)32-140T	30	255	242	229	216	196	172	142		

Installation dimensions

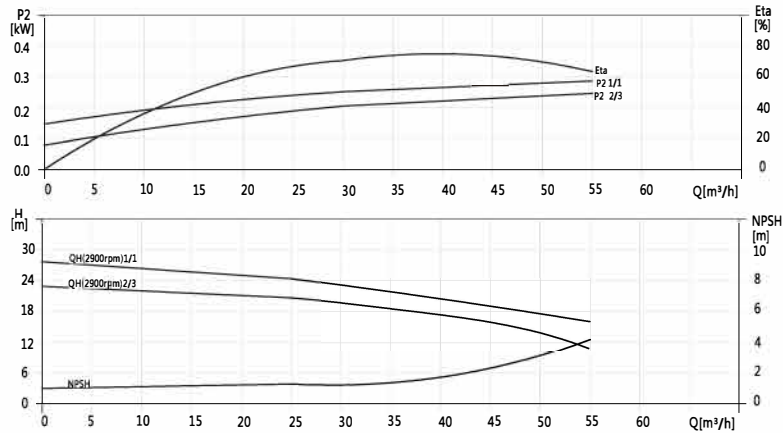


Model	Dimensions(mm)					N.W
	B1	B2	B1+B2	D1	D2	
CDL(F)32-10-1(T) / CDL(F)32-10(T)	513	290	803	190	150	67/70
CDL(F)32-20-2T / CDL(F)32-20T	583	325/335	908/918	197/230	165/188	77/83
CDL(F)32-30-2T / CDL(F)32-30T	653	430	1083	260	208	92
CDL(F)32-40-2T / CDL(F)32-40T	723	505	1153	260	208	101
CDL(F)32-50-2T / CDL(F)32-50T	893	505	1398	330	255	177
CDL(F)32-60-2T / CDL(F)32-60T	963	505	1468	330	255	175
CDL(F)32-70-2T / CDL(F)32-70T	1033	505	1528	330	255	187
CDL(F)32-80-2T / CDL(F)32-80T	1103	505	1608	330	255	191
CDL(F)32-90-2T / CDL(F)32-90T	1173	560	1733	330	255	220
CDL(F)32-100-2T / CDL(F)32-100T	1243	560	1803	330	255	223
CDL(F)32-110-2T / CDL(F)32-110T	1313	590	1903	360	285	260
CDL(F)32-120-2T / CDL(F)32-120T	1383	590	1973	360	285	263
CDL(F)32-130-2T / CDL(F)32-130T	1453	660	2113	400	310	328
CDL(F)32-140-2T / CDL(F)32-140T	1523	660	2183	400	310	332

PERFORMANCE CHART



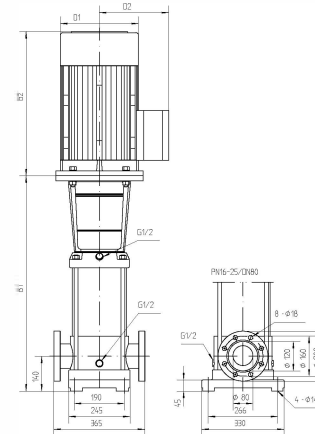
* P2 means the power of a single impeller.



* With "F" means the water inlet and outlet section material is stainless steel, without "F" is iron. T means three-phase.

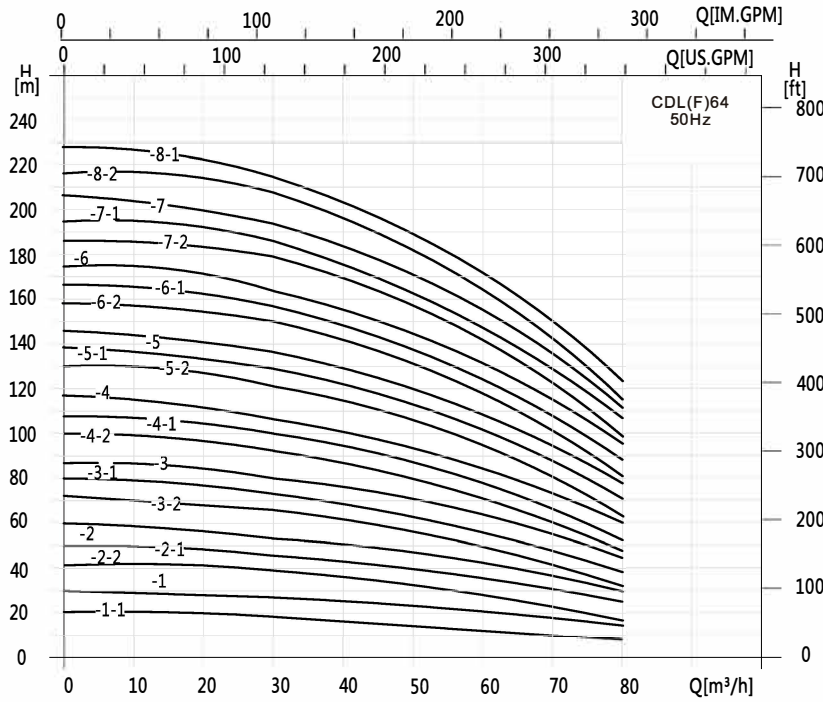
Model	Power (kW)	Q (m³/h) Q (L/min)	25	30	35	40	42	45	50	55
			CDL(F)45-10-1T	3	20	19	18	17	16	15
CDL(F)45-10T	4	24	23	22	21	20	19	17	16	
CDL(F)45-20-2T	5.5	40	39	36	33	32	30	27	23	
CDL(F)45-20T	7.5	48	46	44	42	41	39	35	31	
CDL(F)45-30-2T	11	63	61	58	54	52	50	44	38	
CDL(F)45-30T	11	71	69	66	63	61	58	53	47	
CDL(F)45-40-2	15	87	84	80	75	73	69	62	54	
CDL(F)45-40T	15	95	92	88	84	81	78	71	62	
CDL(F)45-50-2T	18.5	111	107	102	95	93	88	80	69	
CDL(F)45-50T	18.5	119	115	110	105	101	97	88	78	
CDL(F)45-60-2T	22	135	130	124	117	113	108	97	85	
CDL(F)45-60T	22	143	138	132	125	122	116	106	93	
CDL(F)45-70-2T	30	158	152	146	138	134	127	115	100	
CDL(F)45-70T	30	166	161	154	146	142	135	124	109	
CDL(F)45-80-2T	30	182	175	168	159	154	146	133	116	
CDL(F)45-80T	30	190	184	176	167	162	154	141	124	
CDL(F)45-90-2T	30	205	198	190	180	174	166	150	132	
CDL(F)45-90T	37	214	207	198	188	183	174	159	140	
CDL(F)45-100-2T	37	230	221	212	200	194	185	168	147	
CDL(F)45-100T	37	238	230	220	209	203	193	177	155	
CDL(F)45-110-2T	45	255	246	236	223	217	206	188	165	
CDL(F)45-110T	45	263	255	244	232	225	214	196	173	
CDL(F)45-120-2T	45	280	270	259	245	238	226	206	181	
CDL(F)45-120T	45	289	280	268	255	247	236	216	190	
CDL(F)45-130-2T	45	305	294	282	267	259	247	225	198	

Installation dimensions

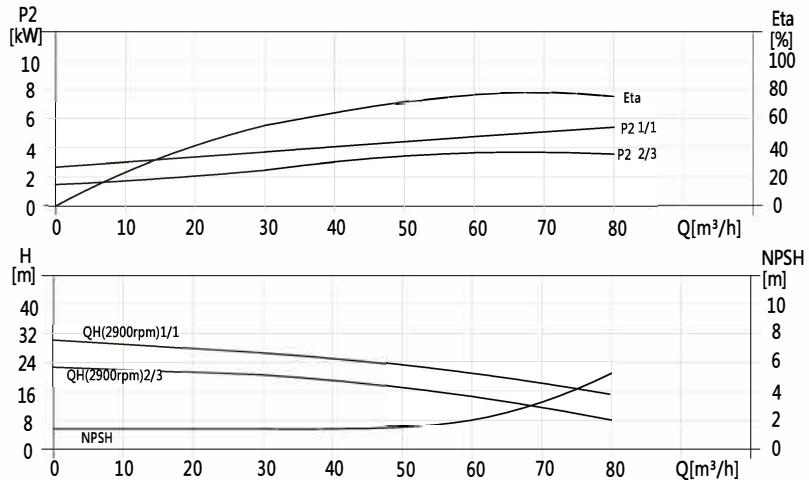


Model	Dimensions(mm)					N.W kg
	B1	B2	B1+B2	D1	D2	
CDL(F)45-10-1T / CDL(F)45-10T	560	325/335	885/900	197/230	165/188	85/91
CDL(F)45-20-2T / CDL(F)45-20T	640	430	1070	260	208	101/106
CDL(F)45-30-2T / CDL(F)45-30T	820	505	1325	330	255	176
CDL(F)45-40-2 / CDL(F)45-40T	900	505	1405	330	255	188
CDL(F)45-50-2T / CDL(F)45-50T	980	560	1540	330	255	209
CDL(F)45-60-2T / CDL(F)45-60T	1060	590	1650	360	285	252
CDL(F)45-70-2T / CDL(F)45-70T	1140	660	1800	400	310	314
CDL(F)45-80-2T / CDL(F)45-80T	1220	660	1800	400	310	318
CDL(F)45-90-2T / CDL(F)45-90T	1300	660	1960	400	310	322/342
CDL(F)45-100-2T / CDL(F)45-100T	1380	660	2040	400	310	346
CDL(F)45-110-2T / CDL(F)45-110T	1490	700	2190	460	340	412
CDL(F)45-120-2T / CDL(F)45-120T	1570	700	2270	460	340	416
CDL(F)45-130-2T	1650	700	2350	460	340	420

PERFORMANCE CHART



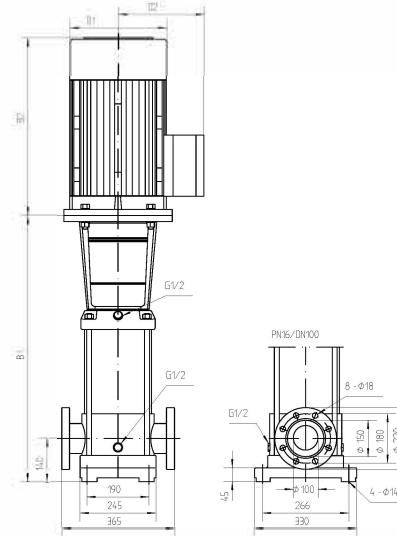
* P2 means the power of a single impeller.



* With "F" means the water inlet and outlet section material is stainless steel, without "F" is iron. T means three-phase.

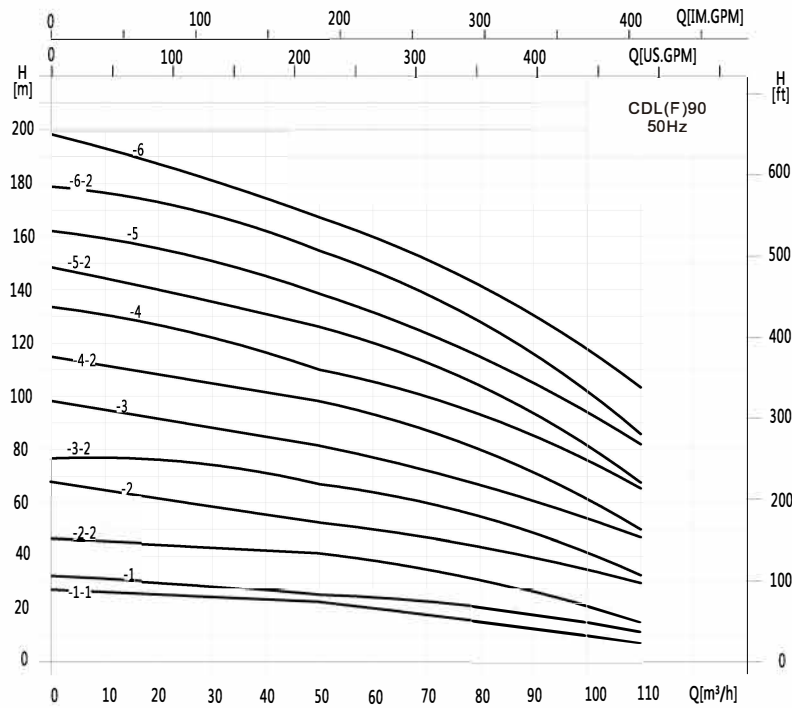
Model	Power (kW)	Q (m³/h) Q (L/min)	30	40	50	60	65	70	80
			CDL(F)64-10-1T	4	19	18	16	14	13
CDL(F)64-10T	5.5	27	25	23	21	20	18	15	
CDL(F)64-20-2T	7.5	39	36	33	29	26	23	17	
CDL(F)64-20-1T	11	46	44	40	36	33	30	24	
CDL(F)64-20T	11	53	51	47	43	40	37	30	
CDL(F)64-30-2T	15	66	62	56	50	46	41	32	
CDL(F)64-30-1T	15	73	69	63	57	53	48	39	
CDL(F)64-30T	18.5	80	76	70	64	60	55	46	
CDL(F)64-40-2T	18.5	92	87	80	71	66	60	47	
CDL(F)64-40-1T	22	100	94	87	78	73	67	54	
CDL(F)64-40T	22	107	101	94	85	80	74	61	
CDL(F)64-50-2T	30	121	114	105	95	88	80	64	
CDL(F)64-50-1T	30	128	121	112	102	95	87	71	
CDL(F)64-50T	30	136	129	119	109	102	94	78	
CDL(F)64-60-2T	30	150	142	131	118	110	101	81	
CDL(F)64-60-1T	37	157	149	138	125	117	108	88	
CDL(F)64-60T	37	164	156	145	132	124	115	95	
CDL(F)64-70-2T	37	179	169	156	141	132	121	99	
CDL(F)64-70-1T	37	186	176	163	148	139	128	106	
CDL(F)64-70T	45	193	183	170	155	146	135	112	
CDL(F)64-80-2T	45	207	196	182	164	154	142	116	
CDL(F)64-80-1T	45	215	203	189	171	161	149	123	

Installation dimensions

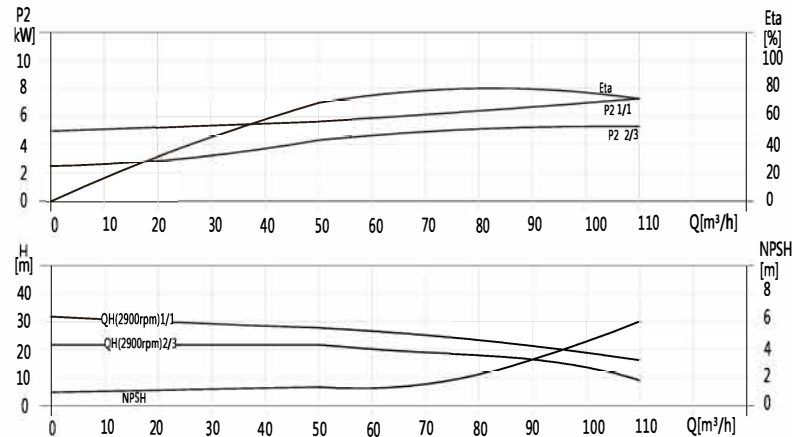


Model	Dimensions(mm)					N.W kg
	B1	B2	B1+B2	D1	D2	
CDL(F)64-10-1T	576	210	911	230	188	106
CDL(F)64-10T	576	430	1006	260	208	111
CDL(F)64-20-2T	658		1008			121
CDL(F)64-20-1T	758	505	1263	330	255	156
CDL(F)64-20T	758		1263			156
CDL(F)64-30-2T	840		1345			196
CDL(F)64-30-1T	840	560	1345	360	285	196
CDL(F)64-30T	840		1400			207
CDL(F)64-40-2T	922	590	1482	360	285	210
CDL(F)64-40-1T	922		1512			261
CDL(F)64-40T	922	590	1512	360	285	261
CDL(F)64-50-2T	1004		1664			346
CDL(F)64-50-1T	1004		1664			346
CDL(F)64-50T	1004	590	1664	360	285	346
CDL(F)64-60-2T	1086		1746			351
CDL(F)64-60-1T	1086	710	1746	460	340	371
CDL(F)64-60T	1086		1746			371
CDL(F)64-70-2T	1168	710	1828	460	340	376
CDL(F)64-70-1T	1168		1828			376
CDL(F)64-70T	1198	710	1908	460	340	437
CDL(F)64-80-2T	1280		1990			443
CDL(F)64-80-1T	1280	1990	443			

PERFORMANCE CHART



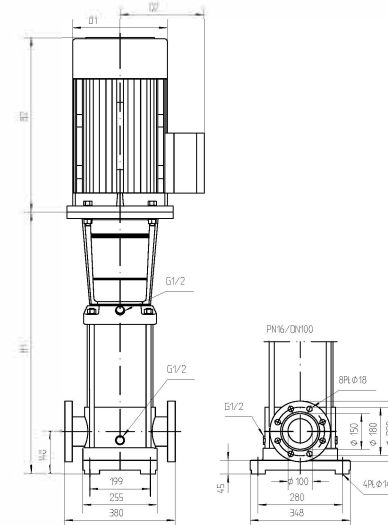
* P2 means the power of a single impeller.



* With "F" means the water inlet and outlet section material is stainless steel, without "F" is iron. T means three-phase.

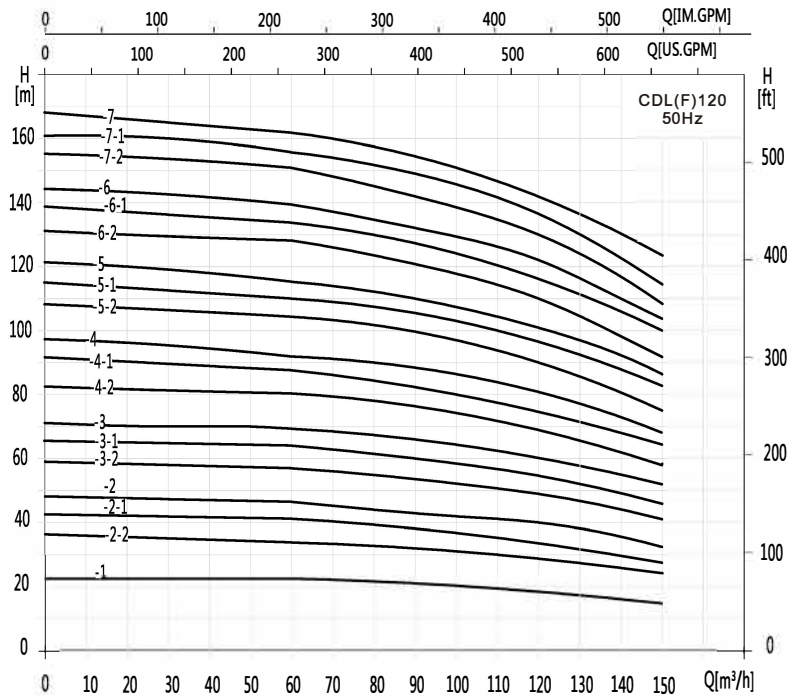
Model	Power (kW)	Q (m³/h) Q (L/min)	50	60	70	80	85	90	100	110
			833	1000	1167	1333	1417	1500	1667	1833
CDL(F)90-10-1T	5.5		22	19	17	16	14	13	10	6
CDL(F)90-10T	7.5		25	24	22	21	20	19	16	12
CDL(F)90-20-2T	11		41	39	36	32	30	28	22	15
CDL(F)90-20T	15		53	50	47	44	41	40	36	30
CDL(F)90-30-2T	18.5		68	65	60	55	52	49	41	32
CDL(F)90-30T	22		81	77	72	67	64	62	55	48
CDL(F)90-40-2T	30		98	93	87	80	75	72	62	50
CDL(F)90-40T	30		110	105	100	92	86	84	76	66
CDL(F)90-50-2T	37		126	120	113	104	98	93	81	68
CDL(F)90-50T	37		139	131	124	115	110	106	94	83
CDL(F)90-60-2T	45		155	148	139	129	121	117	102	86
CDL(F)90-60T	45		168	160	150	141	134	130	117	103

Installation dimensions

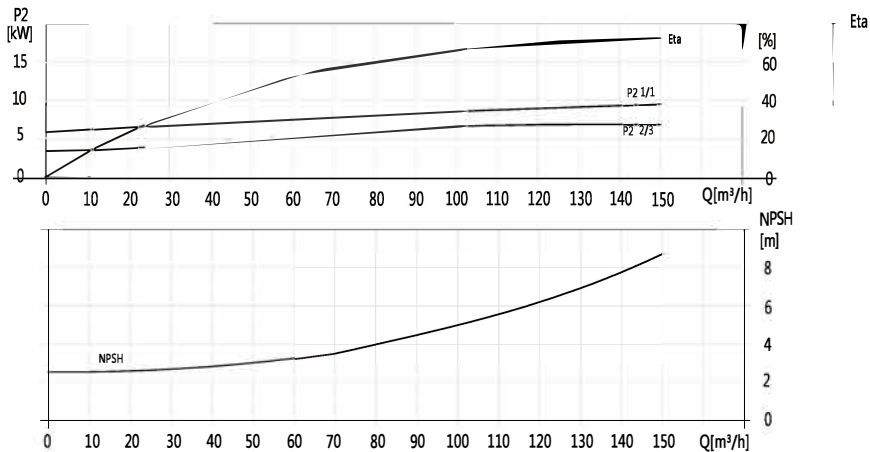


Model	Dimensions(mm)					N.W kg
	B1	B2	B1+B2	D1	D2	
CDL(F)90-10-1T	587	430	1017	260	208	122
CDL(F)90-10T	587	430	1017	260	208	124
CDL(F)90-20-2T	779	505	1284	330	255	167
CDL(F)90-20T	779	505	1284	330	255	200
CDL(F)90-30-2T	871	560	1431	330	255	214
CDL(F)90-30T	871	590	1461	360	285	268
CDL(F)90-40-2T	963	660	1623	400	310	350
CDL(F)90-40T	963	660	1623	400	310	350
CDL(F)90-50-2T	1055	660	1715	400	310	377
CDL(F)90-50T	1055	660	1715	400	310	377
CDL(F)90-60-2T	1177	700	1887	460	340	440
CDL(F)90-60T	1177	700	1887	460	340	440

PERFORMANCE CHART



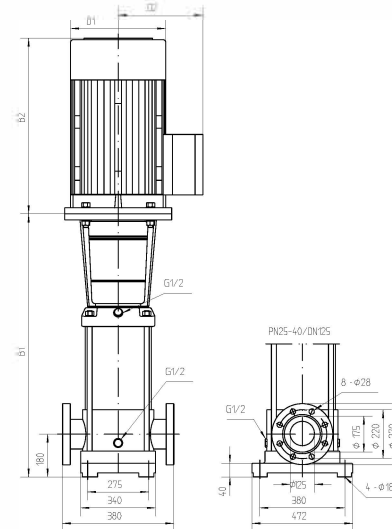
* P2 means the power of a single impeller.



* With "F" means the water inlet and outlet section material is stainless steel, without "F" is iron. T means three-phase.

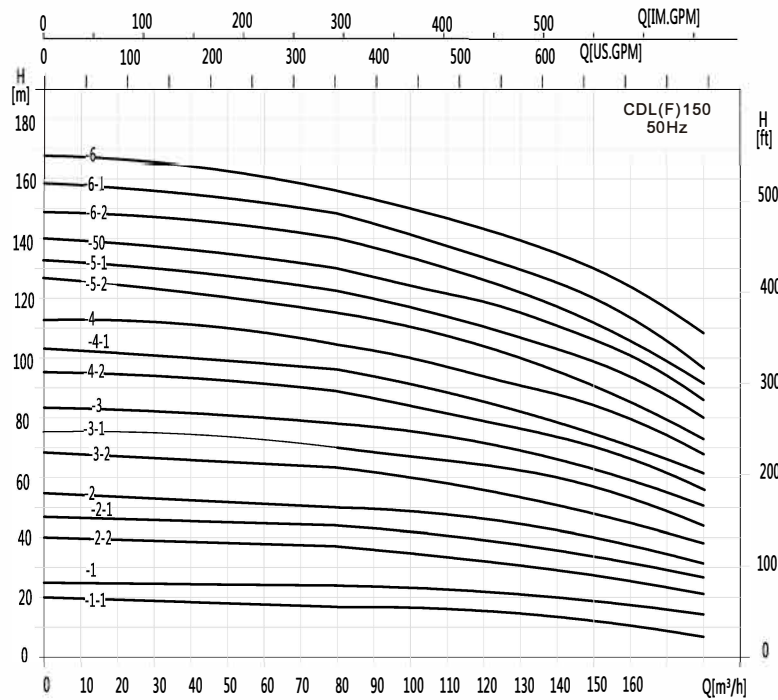
Model	Power (kW)	Q (m³/h) Q (L/min)	60	70	80	90	100	110	120	130	140	150
			CDL(F)120-10T	11	1000	1167	1333	1500	1667	1833	2000	2167
CDL(F)120-20-2T	15	22	21.8	21.6	21	20.5	19.5	18.5	17	16	15	
CDL(F)120-20-1T	18.5	34	33.6	33	31	30.2	30	28.5	27	25	24	
CDL(F)120-20T	22	41	40	39.5	38.5	37	36.5	34.5	32.5	30	27.5	
CDL(F)120-30-2T	30	46	45	44.5	43.5	42.4	41	40	38	36	33.5	
CDL(F)120-30-1T	30	57	56	55	53.5	52	51	49	46.5	43.5	41	
CDL(F)120-30T	30	64	63	62	60	58.5	57.5	55.5	52	49	46	
CDL(F)120-40-2T	37	69.5	68.5	67.5	66	64.4	62.5	61	57.5	54.5	51	
CDL(F)120-40-1T	37	80.5	79	78	76	73.5	72	69	66	61.5	58	
CDL(F)120-40T	45	87	86	84.5	82	80	78	76	72	68	64.5	
CDL(F)120-50-2T	45	92.5	91	90	88	85.5	83	81	77	73	68.5	
CDL(F)120-50-1T	45	104.5	103	101	99	96	93	90	85.5	80.5	75.5	
CDL(F)120-50T	55	110.5	109	107.5	105	102	100	97	92	86.5	83	
CDL(F)120-60-2T	55	115.5	114	113	110	107.5	104.5	101.5	96	91	86	
CDL(F)120-60-1T	55	128	125.5	123	121	117.3	113.5	110	104.5	98.5	92.5	
CDL(F)120-60T	75	134	132	130.5	127	124	121	118	111	105	100	
CDL(F)120-70-2T	75	139	137	135	132	128.8	126	123	116	110	109	
CDL(F)120-70-1T	75	151	148	145.5	143	138.6	134	130	123.5	116.5	109	
CDL(F)120-70T	75	156.5	154	152	148.5	144.5	141	137.5	130	123	116.5	
CDL(F)120-70T	75	162.5	160.5	158.5	155	151	148	145	137	129	123	

Installation dimensions

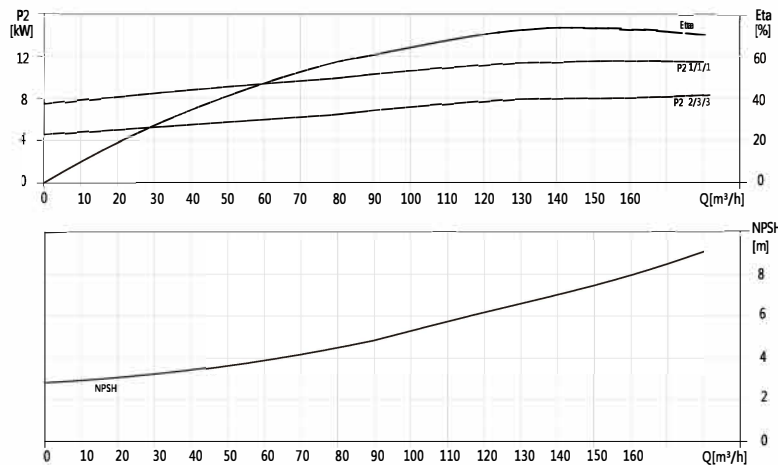


Model	Dimensions(mm)					N.W kg
	B1	B2	B1+B2	D1	D2	
CDL(F)120-10T	840	490	1330	330	255	230
CDL(F)120-20-2T	1000	490	1490	330	255	245
CDL(F)120-20-1T	1000	550	1550	330	255	250
CDL(F)120-20T	1000	590	1590	360	285	285
CDL(F)120-30-2T	1160	660	1820	400	310	360
CDL(F)120-30-1T	1160	660	1820	400	310	360
CDL(F)120-30T	1160	660	1820	400	310	360
CDL(F)120-40-2T	1320	660	1980	400	310	400
CDL(F)120-40-1T	1320	660	1980	400	310	400
CDL(F)120-40T	1320	700	2020	460	340	460
CDL(F)120-50-2T	1480	700	2180	460	340	470
CDL(F)120-50-1T	1480	700	2180	460	340	470
CDL(F)120-50T	1510	770	2280	540	370	575
CDL(F)120-60-2T	1670	770	2440	540	370	585
CDL(F)120-60-1T	1670	770	2440	540	370	585
CDL(F)120-60T	1670	845	2515	580	410	705
CDL(F)120-70-2T	1830	845	2675	580	410	715
CDL(F)120-70-1T	1830	845	2675	580	410	715
CDL(F)120-70T	1830	845	2675	580	410	715

PERFORMANCE CHART



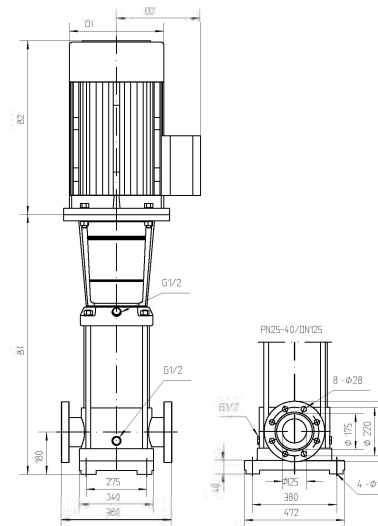
* P2 means the power of a single impeller.



* With "F" means the water inlet and outlet section material is stainless steel, without "F" is iron. T means three-phase.

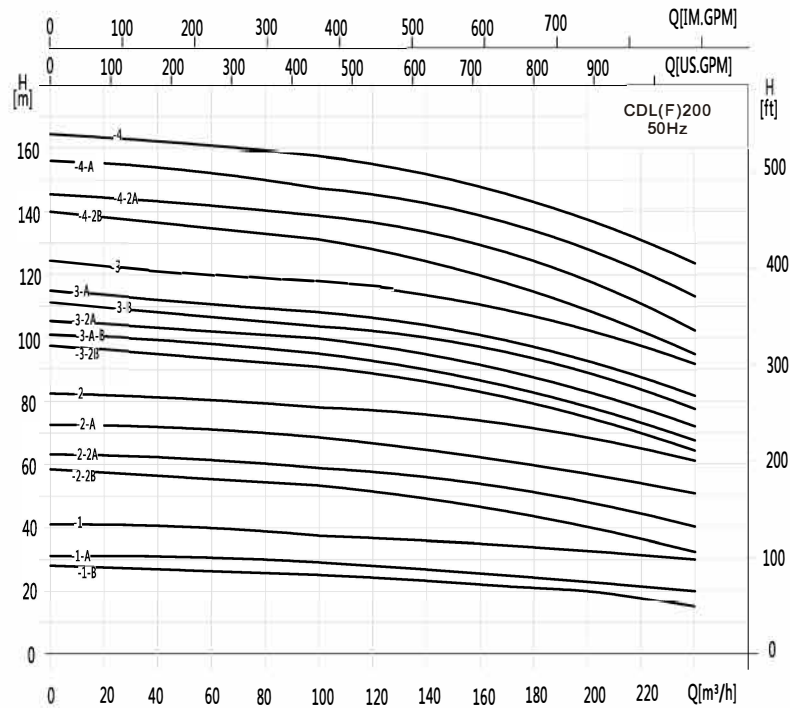
Model	Power (kW)	Q (m³/h)	Q (L/min)	80	90	100	110	120	130	140	150	160	170	180
				1333	1500	1667	1833	2000	2167	2333	2500	2667	2833	3000
CDL(F)150-10-1T	11			18.3	17.8	17.3	17	16	15	14	12.5	11	10	8.5
CDL(F)150-10T	15			24	23	22.5	22	21.5	20.5	20	18.5	17	16	15
CDL(F)150-20-2T	18.5			37	35.5	34	33	32	31	29	27.5	26	23	21
CDL(F)150-20-1T	22			44.3	43	42	40	39	38.5	37.5	35	33	30	27
CDL(F)150-20T	30			50	49	48	47	45.5	44	42	40	37	34	32
CDL(F)150-30-2T	30			63.5	61	59	57.5	56	54.5	53	49	45.5	42	39
CDL(F)150-30-1T	37			70	68	67	65	63	62	60	56	53	49	45
CDL(F)150-30T	37			78	76.5	75	73	70.5	68	66	63	59	55	50.5
CDL(F)150-40-2T	45			89	87	84	81.5	79	77	74.5	70.5	65.5	60	56
CDL(F)150-40-1T	45			96.5	94	91.5	89	86.5	84	81.5	77	72.5	67	62
CDL(F)150-40T	55			104	102	100	87	95	91	88	84	79.5	74	68
CDL(F)150-50-2T	55			115.5	112	109	106	102.5	100	97	92	86	79	73.5
CDL(F)150-50-1T	75			122.5	119.5	117	113.5	111.5	107.5	104.5	99	93.5	87	80
CDL(F)150-50T	75			130	127.5	125	121	119	115	111.5	106.5	101	94.5	86.5
CDL(F)150-60-2T	75			140	137	133	130	126	121	118	112	106	98	91
CDL(F)150-60-1T	75			148.5	145	141.7	137.5	135	131	127	120.5	114.5	106.5	97.5
CDL(F)150-60T	75			157	153	149	145	142	139.5	137	130	123.5	116	109

Installation dimensions

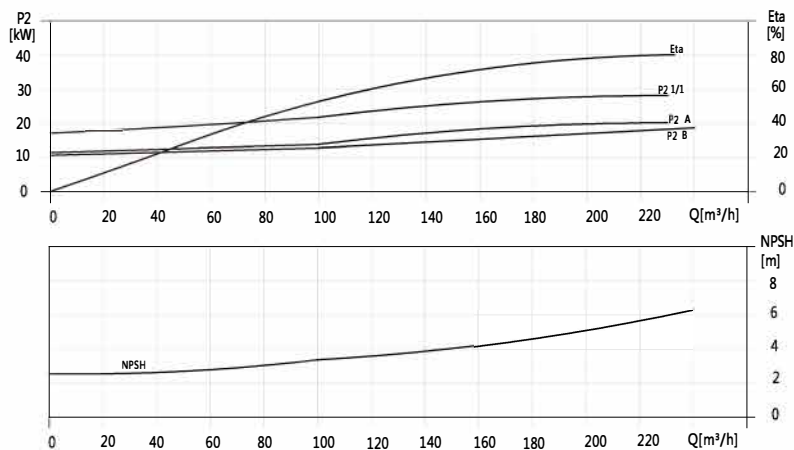


Model	Dimensions(mm)					N.W kg
	B1	B2	B1+B2	D1	D2	
CDL(F)150-10-1T	840	490	1330	330	255	230
CDL(F)150-10T	840	490	1330	330	255	235
CDL(F)150-20-2T	1000	550	1550	330	255	250
CDL(F)150-20-1T	1000	590	1590	360	285	295
CDL(F)150-20T	1000	660	1660	400	310	350
CDL(F)150-30-2T	1160	660	1820	400	310	360
CDL(F)150-30-1T	1160	660	1820	400	310	360
CDL(F)150-30T	1160	660	1820	400	310	385
CDL(F)150-40-2T	1320	700	2020	460	340	460
CDL(F)150-40-1T	1320	700	2020	460	340	460
CDL(F)150-40T	1350	770	2120	540	370	560
CDL(F)150-50-2T	1510	770	2280	540	370	570
CDL(F)150-50-1T	1510	845	2355	580	410	690
CDL(F)150-50T	1510	845	2355	580	410	690
CDL(F)150-60-2T	1670	845	2515	580	410	700
CDL(F)150-60-1T	1670	845	2515	580	410	700
CDL(F)150-60T	1670	845	2515	580	410	700

PERFORMANCE CHART



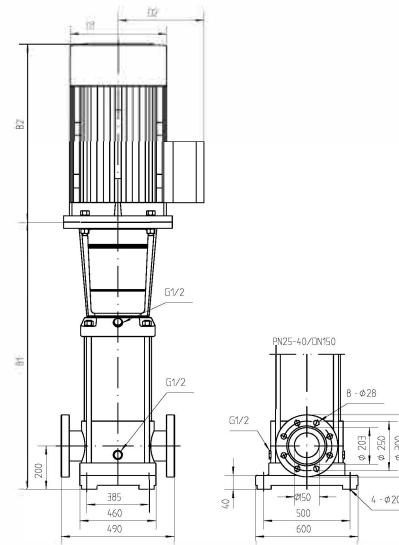
* P2 means the power of a single impeller.



* With "F" means the water inlet and outlet section material is stainless steel, without "F" is iron. T means three-phase.

Model	Power (kW)	Q (m³/h)	100	120	140	160	180	200	220	240
			Q (L/min)	1667	2000	2333	2667	3000	3333	3667
CDL(F)200-10-B	18.5		25.5	25	24	23	21.5	20	18	15.5
CDL(F)200-10-A	22		29	28.5	27.5	26.5	25.5	24	22	20
CDL(F)200-10	30		38.5	38	37.5	36.5	35	34	32.5	30
CDL(F)200-20-2B	37		53	51	49	47	44	41	37	32
CDL(F)200-20-2A	45		59.5	58	56	54	52.5	49	44.5	40.5
CDL(F)200-20-A	55		69	68	66	64	62	59	55.5	51
CDL(F)200-20	55		78.5	77.5	76	74	71.5	69	66	61.5
CDL(F)200-30-2B	75		91.5	89	86.5	83.5	79	75	70	63
CDL(F)200-30-A-B	75		95	93	90	87	83.5	79	73.5	67
CDL(F)200-30-2A	75		99.5	97.5	94.5	91.5	89	84	78.5	72
CDL(F)200-30-B	75		104.5	102.5	100	97	93	89	84.5	77.5
CDL(F)200-30-A	75		108	106	103.5	100.5	97.5	93	88	81.5
CDL(F)200-30	90		117.5	116	113.5	110.5	107	103	99	92
CDL(F)200-40-2B	90		131.5	129	125.5	121	115.5	110	103.5	94
CDL(F)200-40-2A	110		138.5	136	132	128	124	118	111	102.5
CDL(F)200-40-A	110		148	145.5	142.2	138	134	128	122	113
CDL(F)200-40	110		157.5	155.5	152.5	148	143.5	138	132.5	123.5

Installation dimensions



Model	Dimensions(mm)					N.W kg
	B1	B2	B1+B2	D1	D2	
CDL(F)200-10-B	907	550	1457	330	255	311
CDL(F)200-10-A	907	575	1482	360	285	347
CDL(F)200-10	907	650	1557	400	310	403
CDL(F)200-20-2B	1101	650	1751	400	310	447
CDL(F)200-20-2A	1101	685	1786	460	340	504
CDL(F)200-20-A	1131	760	1891	540	370	595
CDL(F)200-20	1131	760	1891	540	370	595
CDL(F)200-30-2B	1325	845	2170	580	410	748
CDL(F)200-30-A-B	1325	845	2170	580	410	748
CDL(F)200-30-2A	1325	845	2170	580	410	748
CDL(F)200-30-B	1325	845	2170	580	410	748
CDL(F)200-30-A	1325	845	2170	580	410	748
CDL(F)200-30	1325	895	2170	580	410	748
CDL(F)200-40-2B	1519	895	2220	580	410	817
CDL(F)200-40-2A	1519	1140	2414	645	550	830
CDL(F)200-40-A	1519	1140	2659	645	550	1180
CDL(F)200-40	1519	1140	2659	645	550	1180



Tel:
021-59231

Fax:
021-88806085

E-mail:
info@parsws.com

ADD:
No.440, Motahari St, Tehran, Iran